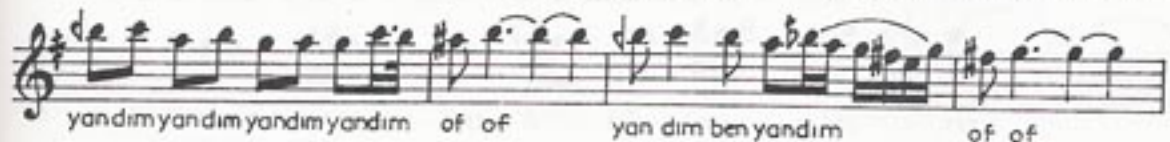
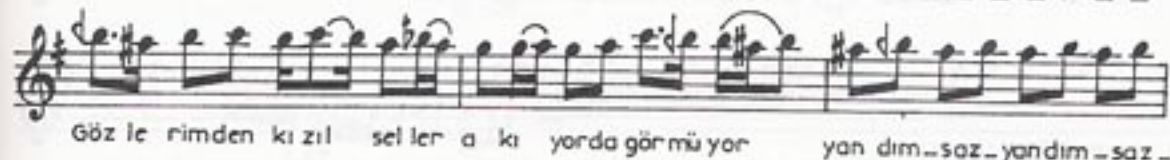
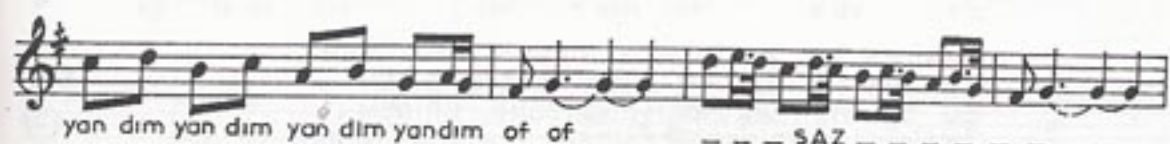
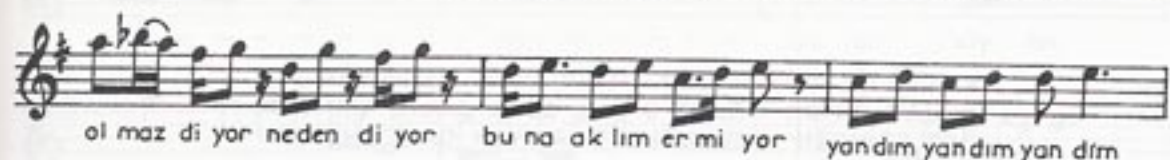
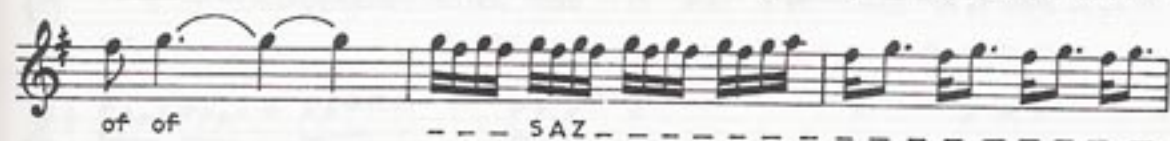
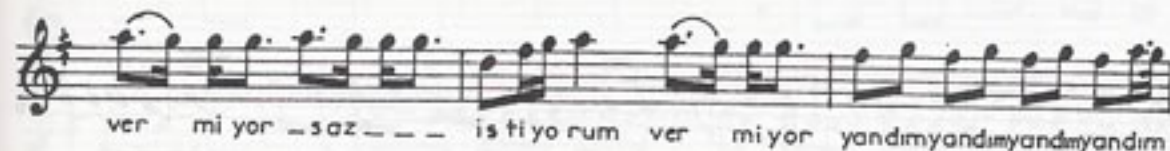


MAHÜR ŞARKI
Feride

USÛLÜ: Sofyan Curcuna
(Değişmeli)

BESTE
ve: Yesârî Âsım
GÜFTE ARSOY



MAHÛR ŞARKI'nın devâmı



FERİDEYİ ANNESİNDEN İSTİYORUM VERMİYOR
OLMAZ DİYOR NEDEN DİYOR BUNA AKLIM ERMİYOR
GÖZLERİMDEN KIZIL SELLER AKIYOR DA GÖRMÜYOR

FERİDEM DE FERİDEM FERİDEMSİZ NE İDEM
FERİDESİZ NE İDEM ACEP NEREYE GİDEM'
ŞU SİLAYI TERK İDEM YÜREĞİMİ ERİDEM
FERİDEM FERİDEM FERİDEM FERİDEM YANDIM OF, OF.