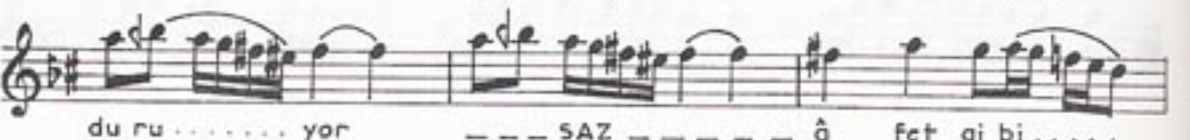
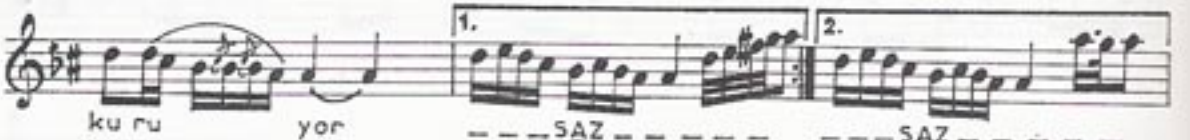
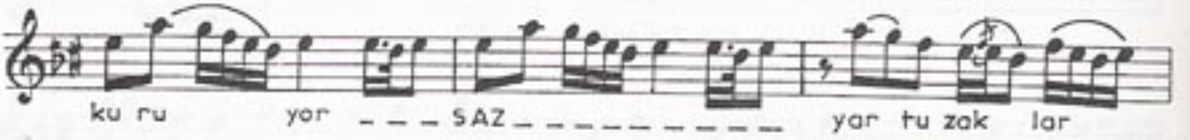
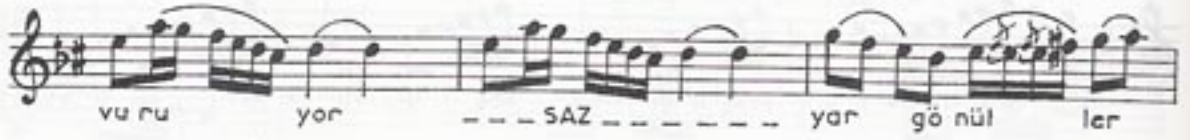
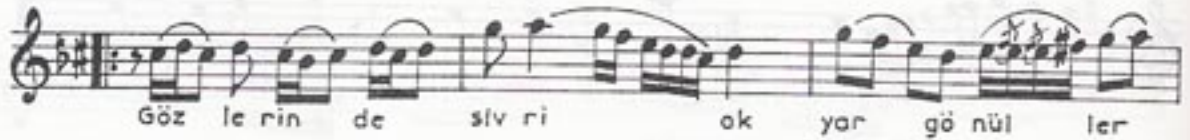
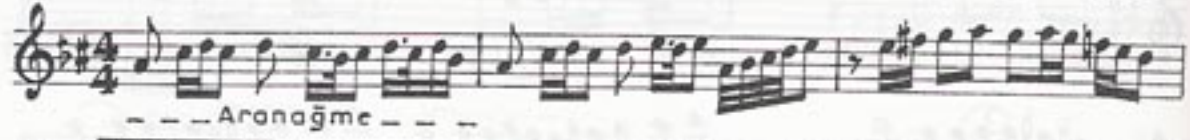


HÜMÂYÛN ŞARKI  
Gözlerinde sivri ok

USÛLÜ : Sofyan

BESTE ve : Yesâri Âsım  
GÜFTE ARSOY



HÜMÂYÛN ŞARKI'nın devâmı

du ru yor

1 SAZ 2. SAZ

GÖZLERİNDE SİVRİ OK YAR GÖNÜLLER VURUYOR  
GAMZELERDEN HANDELERDEN YAR TUZAKLAR KURUYOR  
HELE BAKIN YAR KARŞIMDA ÂFET GİBİ DURUYOR  
GAMZELERDEN HANDELERDEN YAR TUZAKLAR KURUYOR