

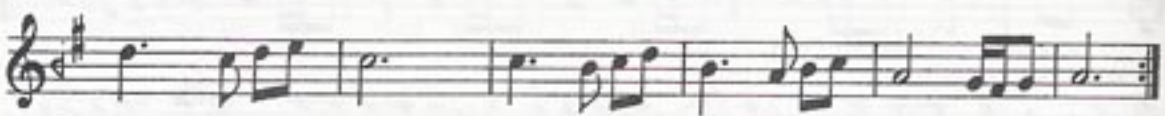
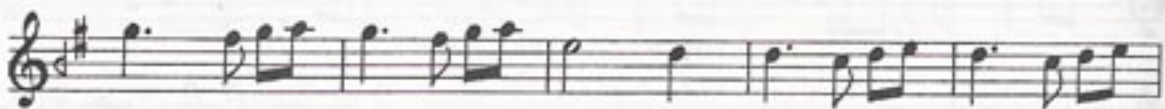
HÜSEYİNİ ŞARKI
Güller mi verir

USÛLÜ : Semâî

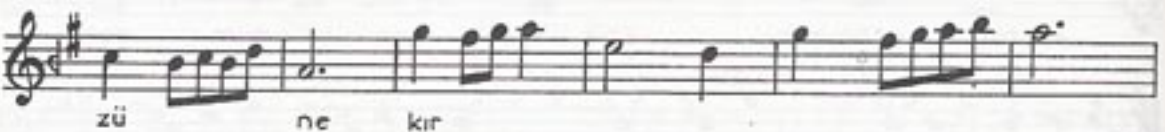
BESTE : Yesârî Âsım
ye GÜFTE : ARSOY



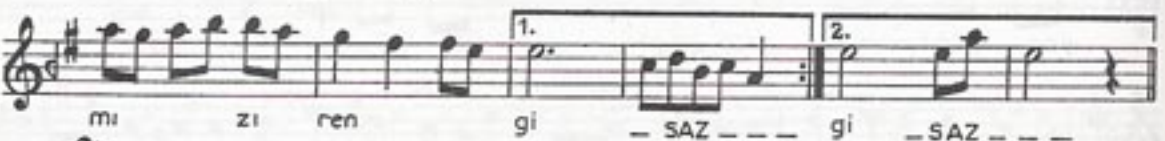
- Aranağme - - - - -



Gül ler mi ve rir kız yü



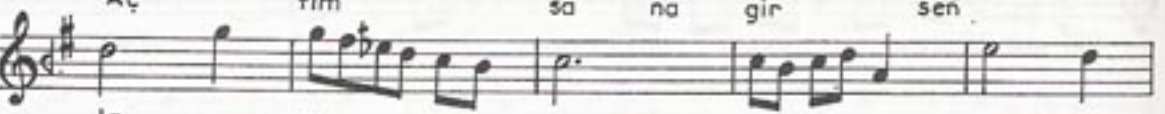
zü ne kır



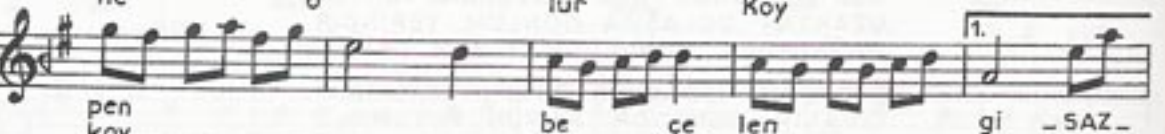
mi zi ren gi -SAZ - - - gi -SAZ - - -



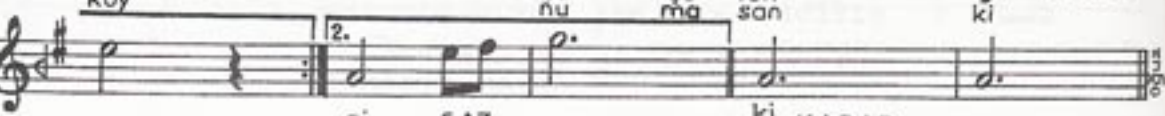
Gel Aç ben tım ö sa re na yim sac sen



la ne ri o na lur pen Koy



pen koy be nu çe ma len san gi -SAZ -



gi -SAZ - - - ki KARAR - - -

HÜSEYİNİ ŞARKI'nın devamı

Bül bül bi le a şık o
lu yor hüs
nü ne bil lah - SAZ - - - lah - SAZ - - -

GÜLLER Mİ VERİR KIZ YÜZÜNE KIRMIZI RENGİ
GEL BEN ÖREYİM SAÇLARINA PENBE ÇELENĞİ
BÜLBÜL BİLE AŞIK OLUYOR HÜSNÜNE BİLLÂH
AÇTIM SANA GİRSEN NE OLUR KOYNUMA SANKİ.