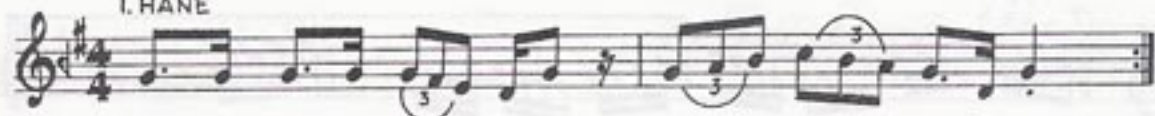


USÛLÜ: Sofyan

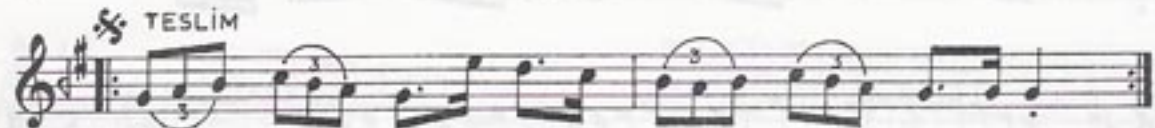
RAST LONGA

Yesârî Âsım
ARSOY

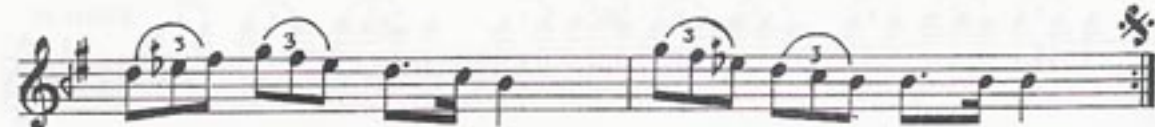
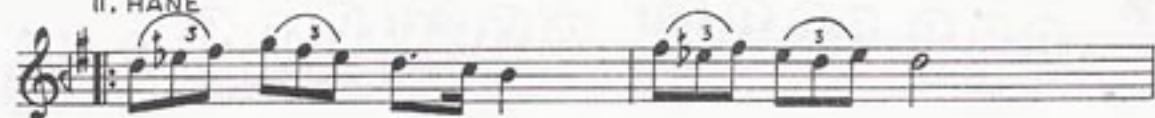
I. HANE



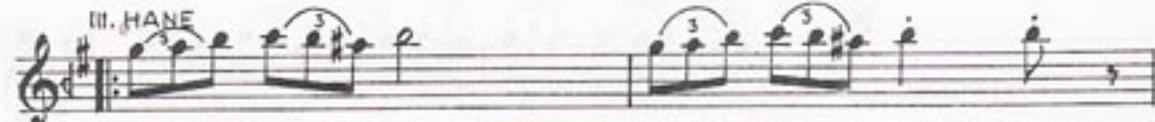
TESLİM



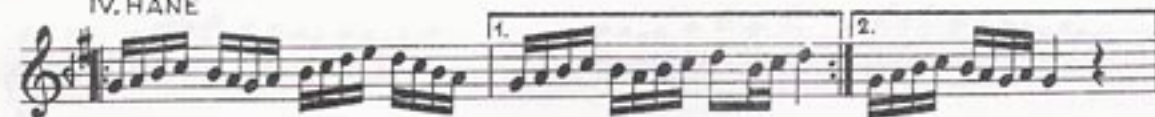
II. HANE



III. HANE



IV. HANE



RAST LONGA_2

The image shows a musical score for a piece titled "RAST LONGA_2". The score is written on three staves in treble clef, with a key signature of one sharp (F#). The first staff begins with a treble clef, a key signature of one sharp, and a 4/4 time signature. It contains a series of eighth-note patterns. A first ending bracket spans the final two measures of the first staff, with a "1." above it. A second ending bracket spans the final two measures of the second staff, with a "2." above it. The second and third staves continue the melodic line with various rhythmic patterns and accidentals, including natural signs and sharps. The third staff ends with a double bar line and a repeat sign.