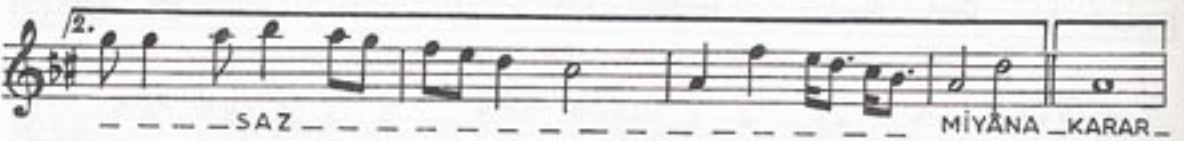
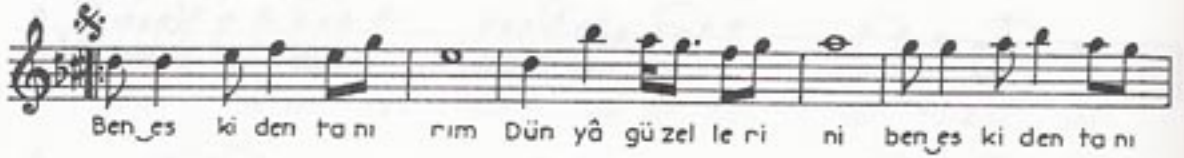
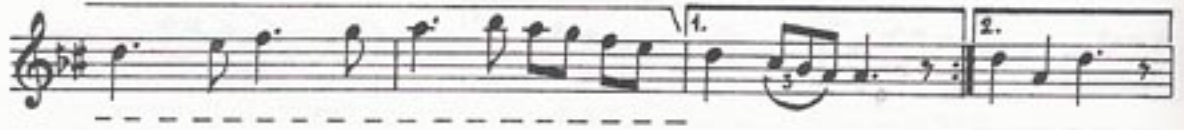
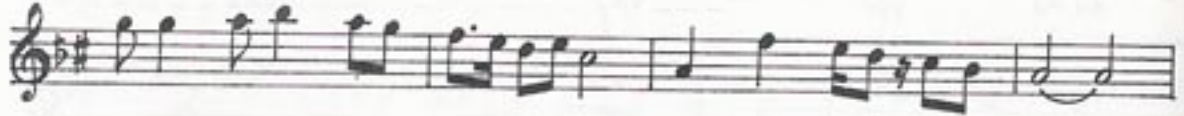
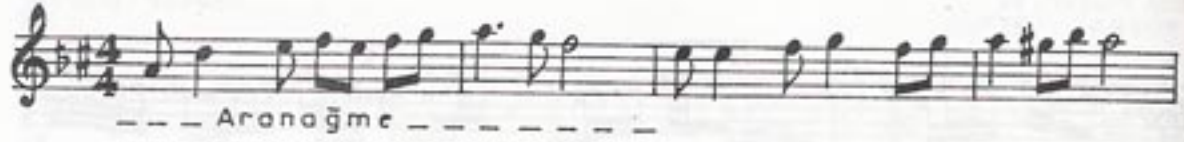


# HÜMAYÛN ŞARKI

Sahil güzelleri

USÛLÜ: Sofyan

BESTE: Yesârî Âsım ARSOY  
GÜFTE: Nâhit Hilmi (1946)  
ÖZEREN



HÜMAYÛN ŞARKI'nın devâmı

Çekin me gel öpeyim o ipek ellerini

Çekin me gel öpeyim o ipek ellerini

1. SAZ

2. SAZ

GÖZLERİNDEN OKUDUM BÜTÜN EMELLERİNİ  
BEN ESKİDEN TANIRIM DÜNYÂ GÜZELLERİNİ  
ÇEKİNME GEL ÖPEYİM O İPEK ELLERİNİ  
BEN ESKİDEN TANIRIM DÜNYÂ GÜZELLERİNİ