

SULTANİYEGÂH ŞARKI

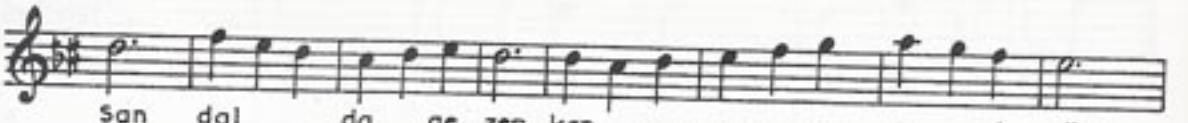
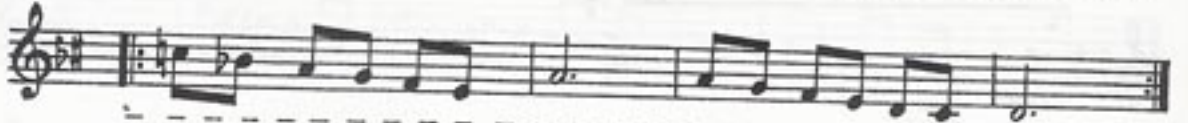
Sandalla gezerken

USÛLÜ: Semâî

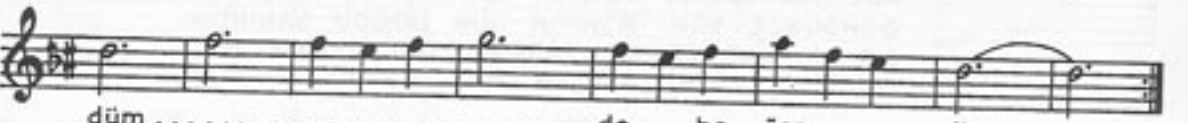
BESTE
VE: Yesârî Âsım
GÜFTE ARSOY



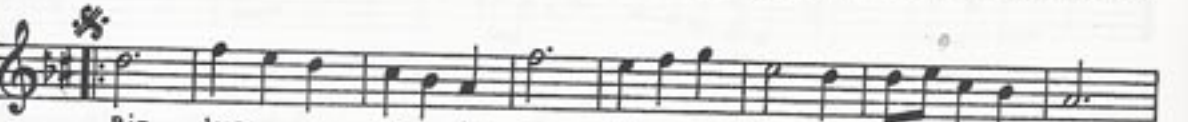
--- Arana ğme ---



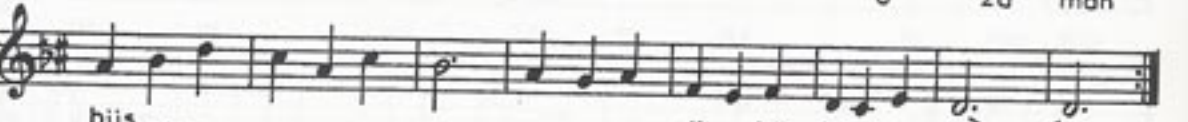
San dal da ge zer ken..... se ni gör



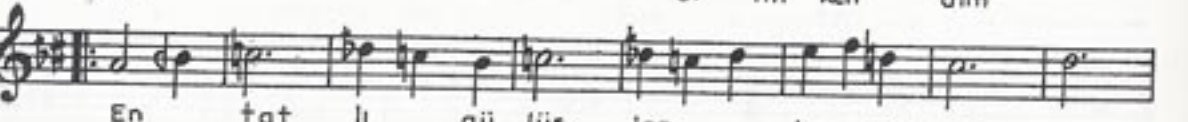
düm..... de be ğen..... dim.....



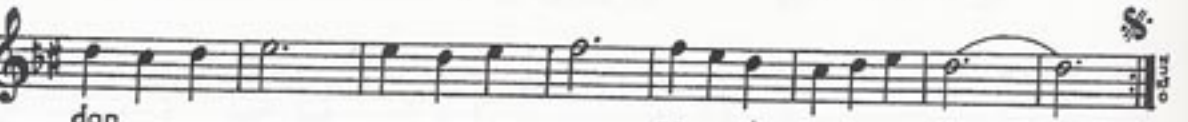
Bir ker..... re ba na bak..... sa de dim
Teb rik e di yar dum o za man



hüs ken..... nü bü len dim
di mi ken dim



En tat lı gü lüş ler le ya nım



dan..... ge çi ver din

SANDALDA GEZERKEN SENİ GÖRDÜM BEĞENDİM
BİR KERRE BANA BAKSA DEDİM HÜSNÜ BÜLENDİM
EN TATLI GÜLÜŞLERLE YANIMDAN GEÇİVERDİN
TEBRİK EDİYORDUM O ZAMAN KENDİMİ KENDİM