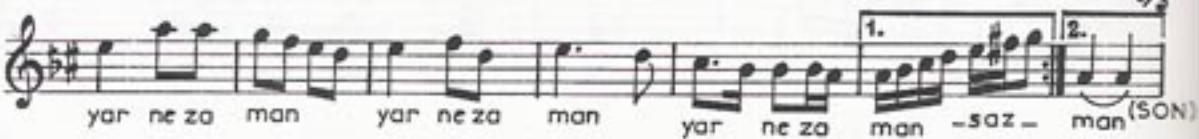
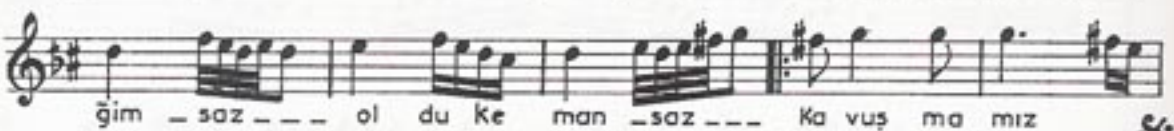
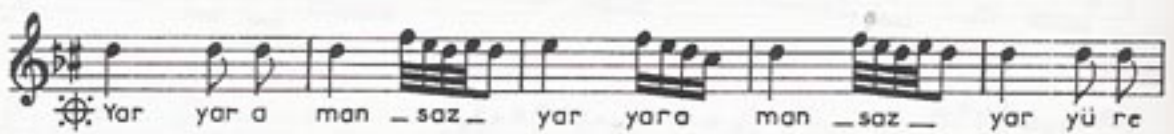
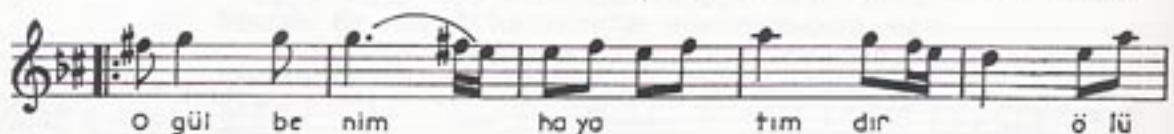


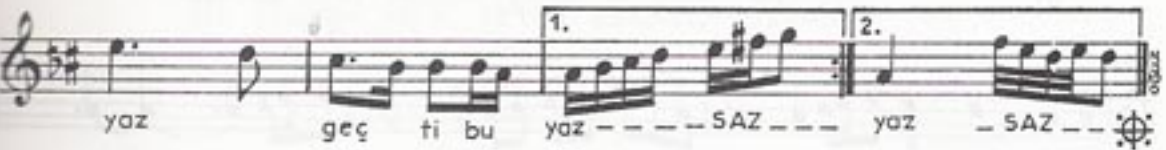
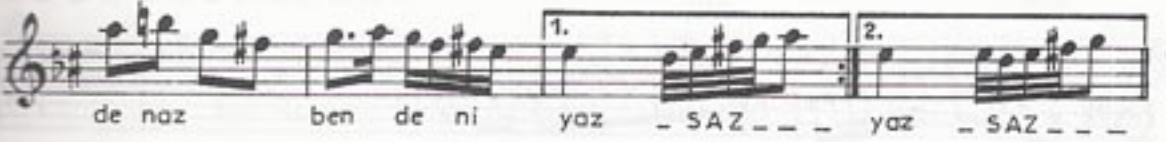
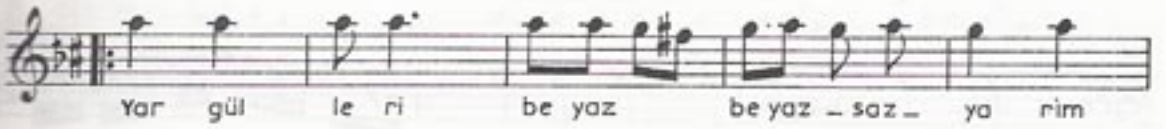
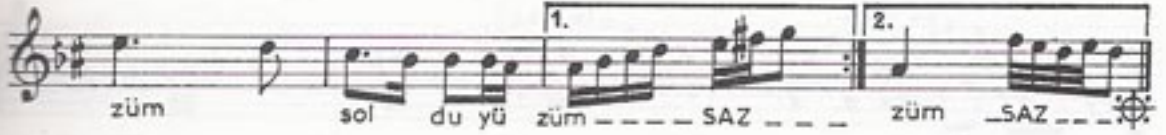
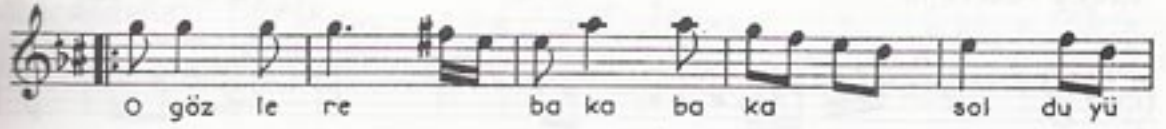
HICÂZ ŞARKI  
Yar saçları lüle lüle

USÛLÜ : Nîm Sofyan

BESTE  
ve : Yesâri Âsım  
GÜFTE ARSOY  
-1942-



HİCÂZ ŞARKI'nın devâmı



I. YAR SAÇLARI LÜLE LÜLE  
YAR BENZİYOR BEYAZ GÜLE  
O GÜL BENİM HAYÂTIMDIR  
ÖLÜRÜM DE VERMEM ELE

YAR YAR AMAN YAR YAR AMAN  
YAR YÜREĞİM OLDU KEMAN  
KAVUŞMAMIZ YAR NE ZAMAN  
YAR NE ZAMAN YAR NE ZAMAN

II. YAR GÖZLERİ ÜZÜM ÜZÜM  
ELLER GECEM YAR GÜNDÜZÜM  
O GÖZLERE BAKA BAKA  
SOLDU YÜZÜM SOLDU YÜZÜM

NAKARAT...

III. YAR GÜLLERİ BEYAZ BEYAZ  
YARİMDE NAZ BENDE NİYAZ  
AŞK FASLINA BAŞLAMADAN  
GEÇTİ BU YAZ GEÇTİ BU YAZ.

NAKARAT...