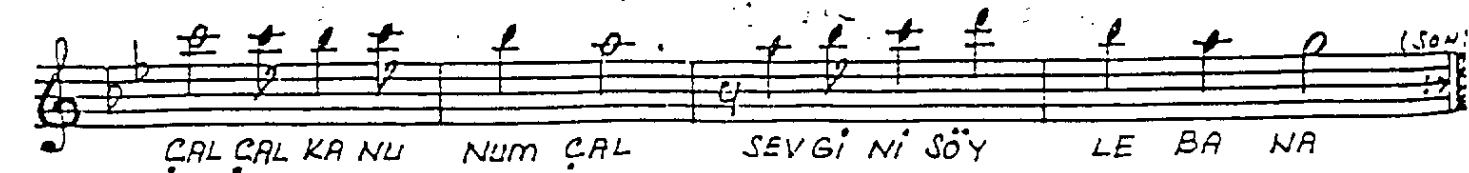
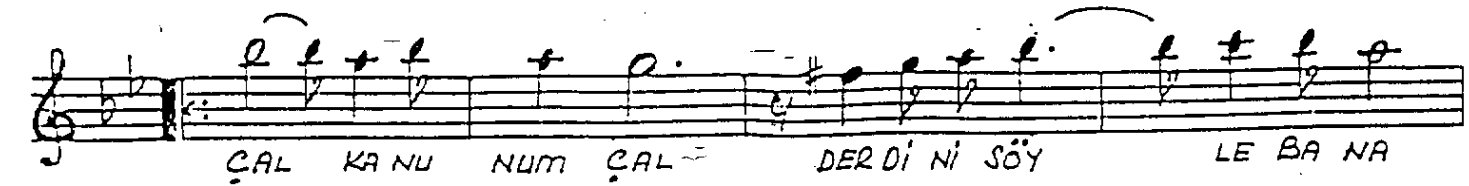
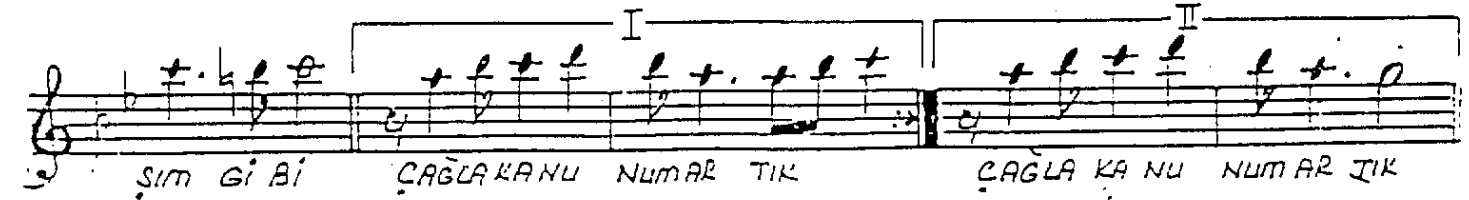
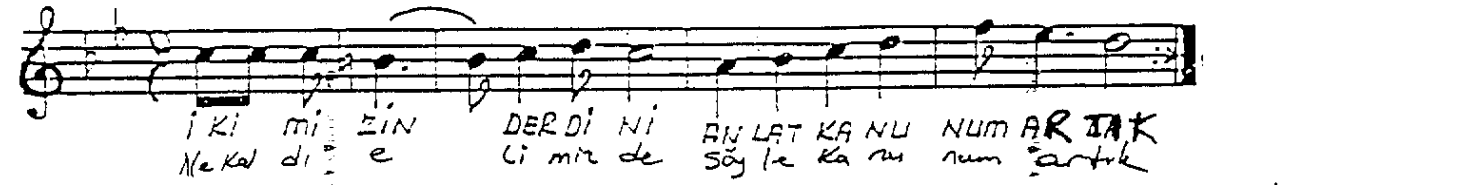
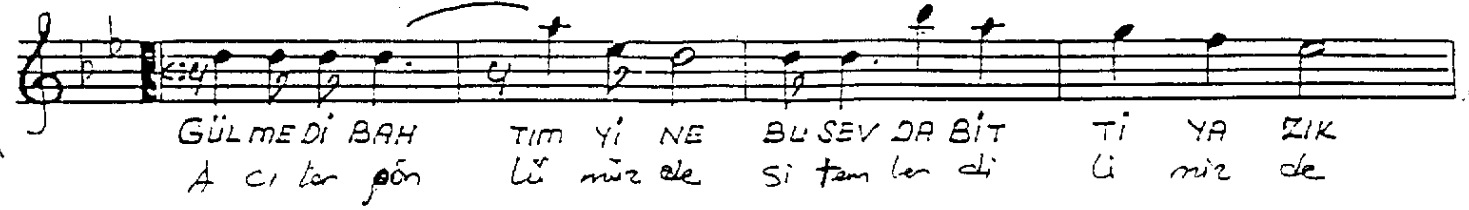


"NİHAVEND ŞARKI.. " YILDIRIM GÜRSES.  
"KANUN-U MUHABBET..



. A R A N A Ğ M E .



GÜLMEDİ BAHTIM YİNE  
BU SEVDA BİTTİ YAZIK  
İKİMİZİN DERDİNİ  
ANLAT KANUNUM ARTIK

ÇİLELİ BAŞIM GİBİ  
GÖNÜLSİZ DAŞIM GİBİ  
AKAN GÖZ YAŞIM GİBİ  
ÇAĞLA KANUNUM ARTIK.

ÇAL KANUNUM ÇAL  
DERDİNİ SÖYLE BANA  
ÇAL ÇAL KANUNUM ÇAL  
SEVGİNİ SÖYLE BANA