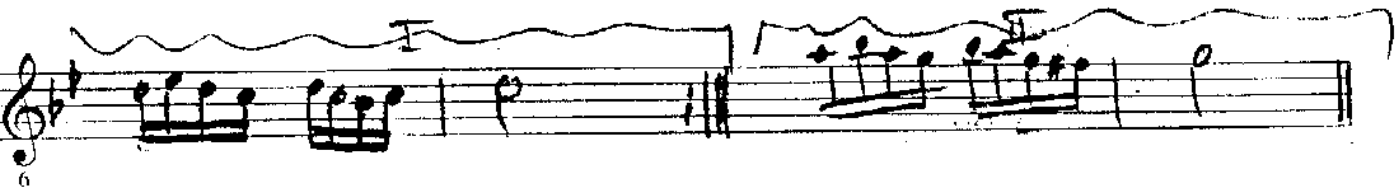
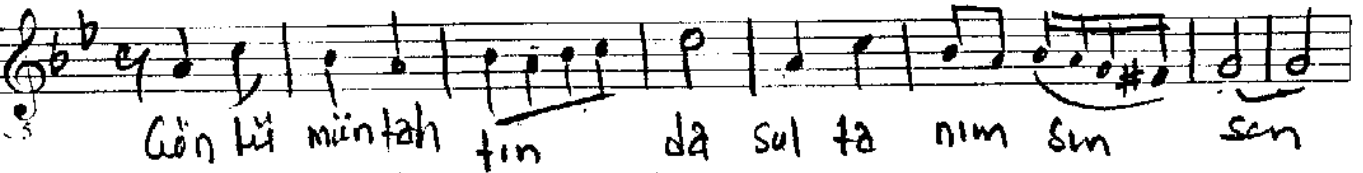
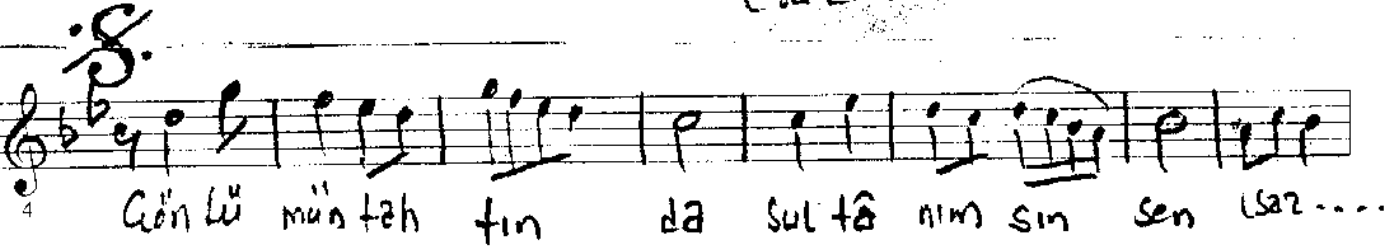
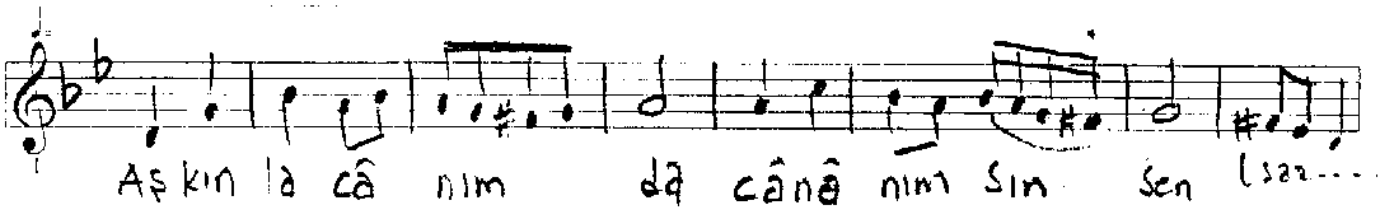
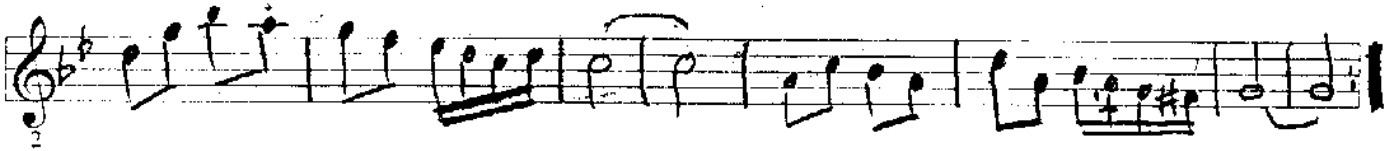
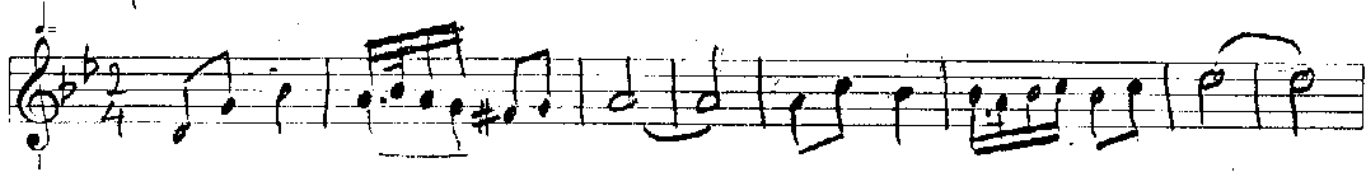


Makam: Nihavend NİHAVEND SARKI

Söz: Erzurumlu İbrahim Hakkı

Usül: Nim Sofyan (AŞKINLA CÂNIMDA CÂNANIMSIN SEN..) Müzik: Yılmaz Karakoyunlu

Süre:  $\text{♩} = 60$



TERENNÜM

7 AH YE LE LELİ YELE LELİ YELE LELİ YEL LEL Lİ

8 TENENENİ TENENENİ TENENENİ TEN NEN Nİ

9 CÂ NİM YELE LEL LEL Lİ

10 Mİ RİM TENE NEN NEN Nİ (SON)

11 (S22 - - - -)

12 BİN BİR DER DİM OL SA DER HÂ NİM SİN SEN

13 BİN BİR DER DİM OL SA DER HÂ NİM SİN SEN

14