

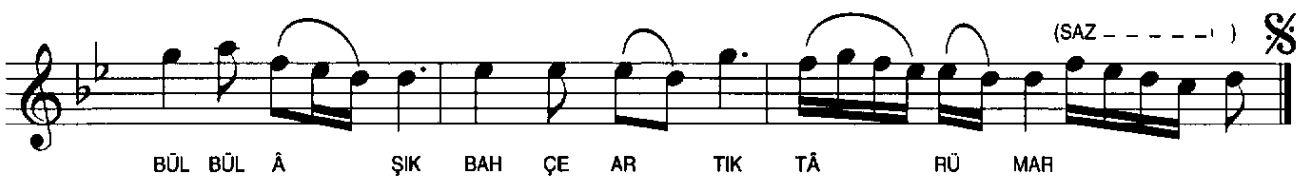
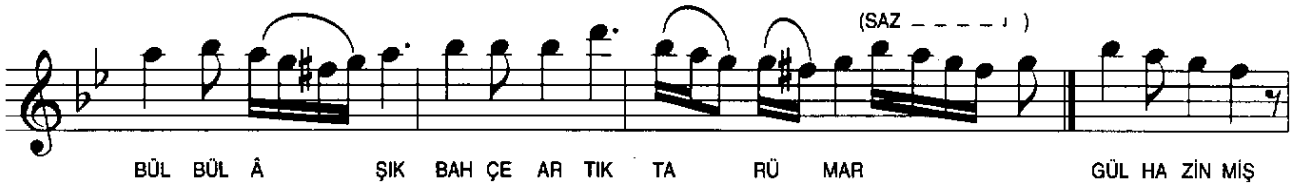
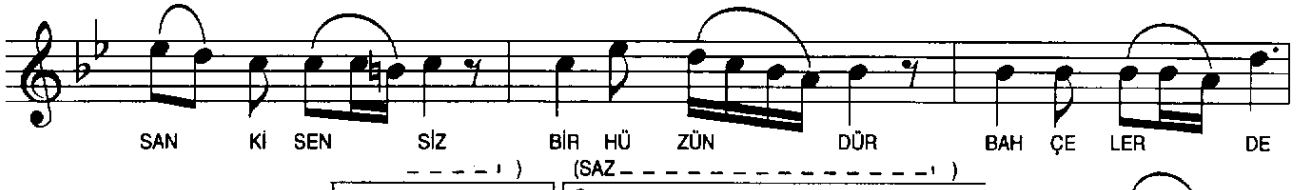
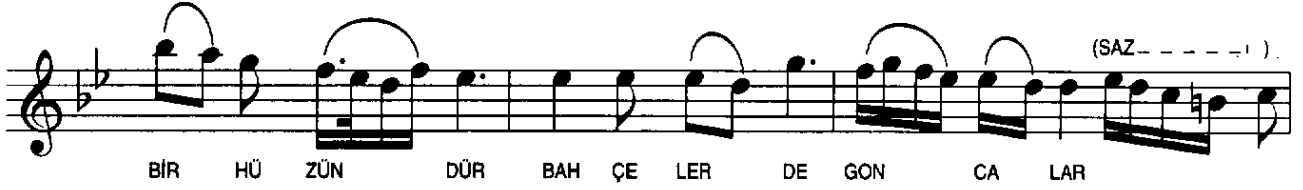
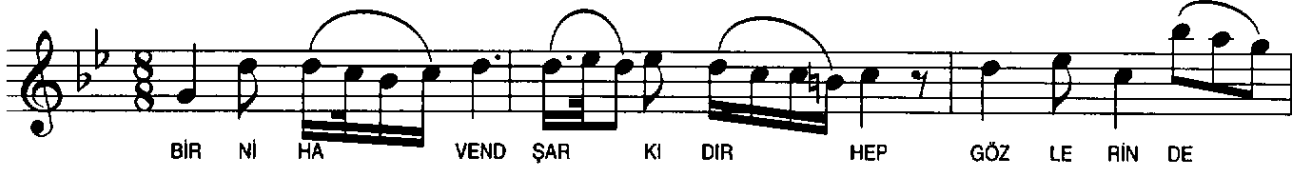
# NIHÂVEND ŞARKI

BİR NİHÂVEND ŞARKIDIR HEP GÖZLERİNDE İLKBAHAR

Usûlü : MÜSEMME

MÜZİK : Yılmaz KARAKOYUNLU

SÖZ : Yılmaz KARAKOYUNLU



GENÇTÜRK

BİR NİHAVEND ŞARKIDIR HEP GÖZLERİNDE İLK BAHAR  
SANKİ SENSİZ BİR HÜZÜNDÜR BAHÇELERDE GONCALAR  
GÜL HAZİN MİŞ BÜLBÜL ÂŞIK BAHÇE ARTIK TÂRUMAR  
SANKİ SENSİZ BİR HÜZÜNDÜR BAHÇELERDE GONCALAR