

Düyek
4.30', ♩ = 192

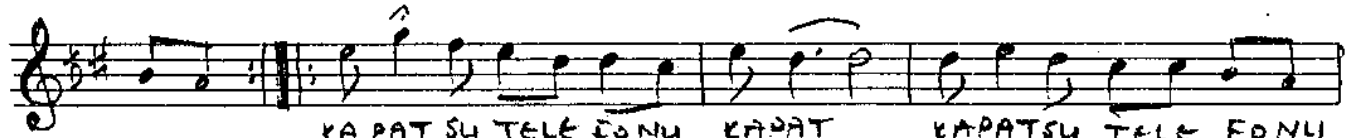
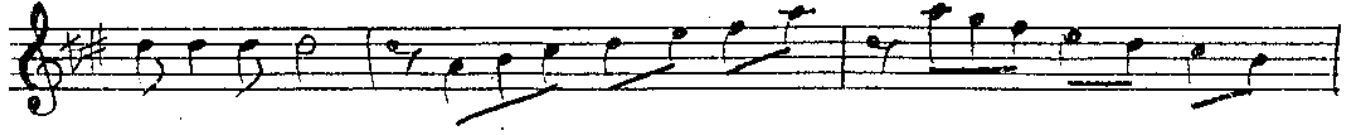
HİCÂZ ŞARKI

"Kapat su telefonu"

Söz ve Müzik: Y. NALKESEN



- ARANAĞME -



KAPAT SU TELE FONU KAPAT KAPATSU TELE FONU



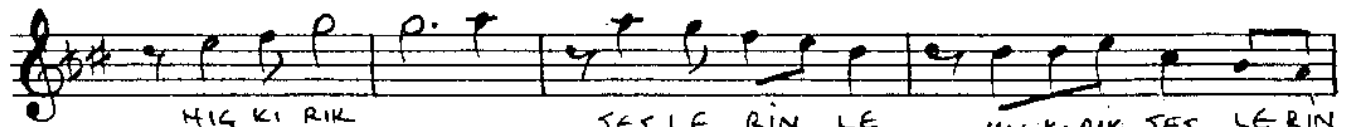
KAPAT AĞLA MAN AĞLA MAN AĞLA MANDI YULMA



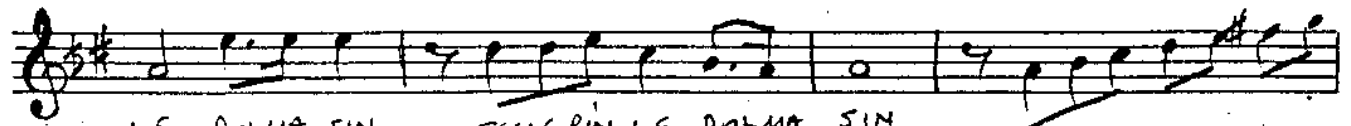
SIN
- SAZ -



KULAKLARIM KULAKLARIM HIÇ KIRIK SESLERİNLE

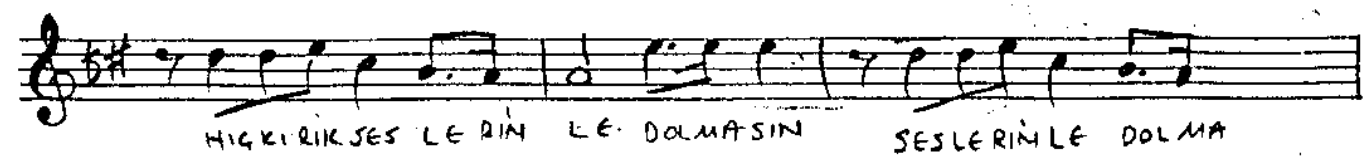
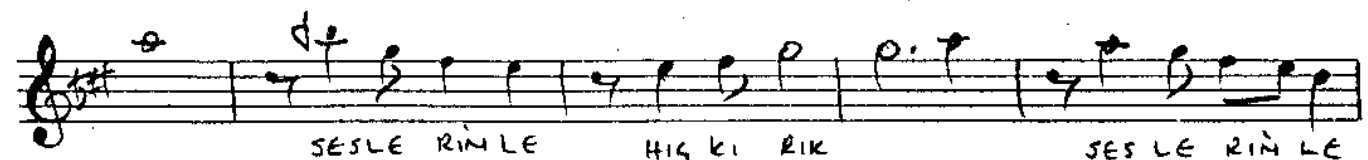
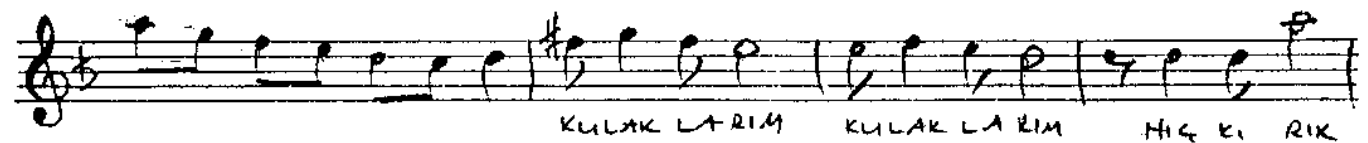
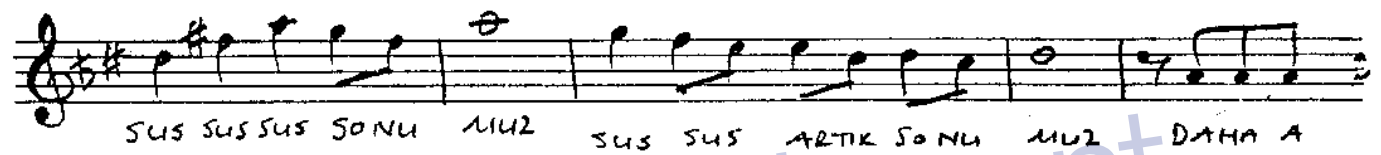
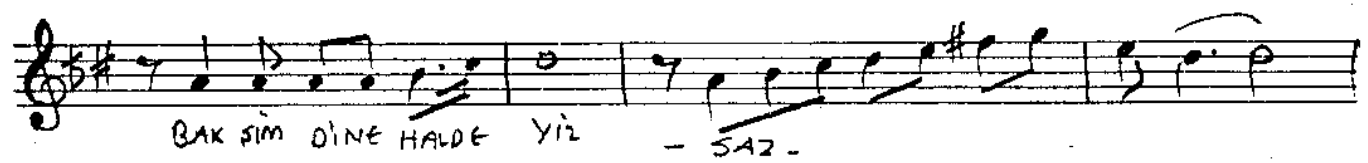
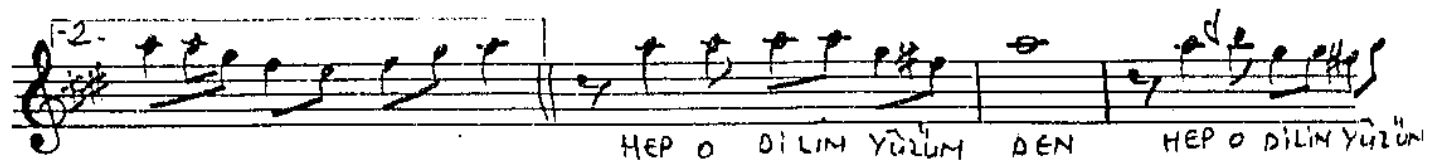
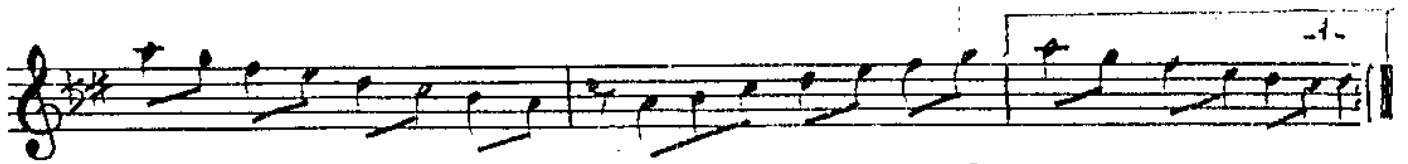


HIÇ KIRIK SESLERİNLE HIÇ KIRIK SESLERİN



LE DOLMA SIN SESLERİNLE DOLMA SIN

- SAZ -



The image shows two staves of handwritten musical notation in G major (one sharp). The first staff contains the lyrics: "JIN KAPATSU TELE FONU KA PAT KA PAT KAPATSU TELE FONU". The second staff contains the lyrics: "KA PAT KA PAT AG LA MANDU YUL MA JIN". The notation includes treble clefs, a key signature of one sharp (F#), and various rhythmic values such as quarter, eighth, and sixteenth notes, along with rests and a fermata over the final note of the first staff.

