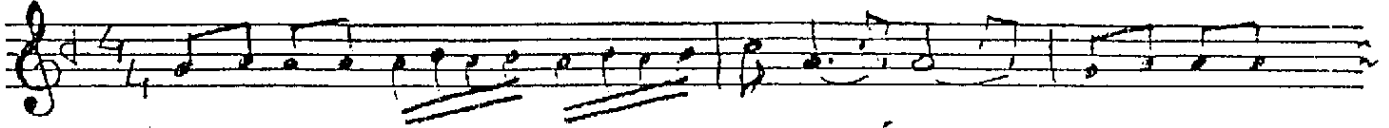
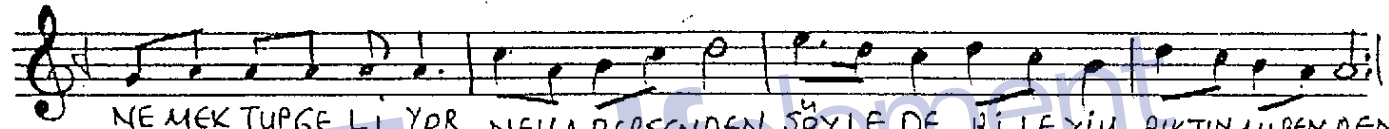


Sofyan
4.30LİSFAK ŞARKI
Ne mektup peliyorSöz: Halit ÇELİKOĞLU
Müz.: Yusuf NALKESEN

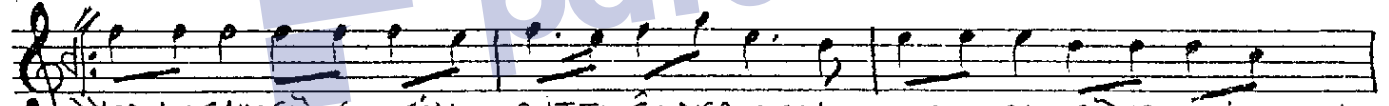
♩ = 112



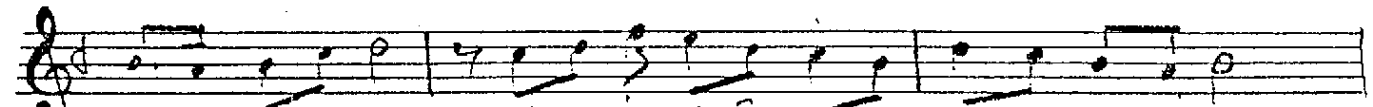
— SAZ —



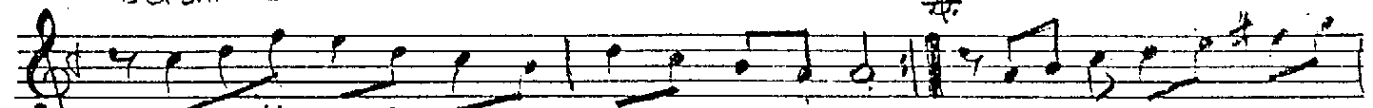
NE MEKTUP GE Lİ YOR NE HA BER SENDEN SÖYLE DE Bİ LE YİM BİKTİN Mİ SENDEN
GE ÇİL MİRGÜR BE TİN SOKAK LARIN DAN ÇİL MEZ SULA RI PİNAR LARIN DAN



HER AK ŞAM GÜNE SİN BATTI Ğİ YER DEN HER AK ŞAM GÜNE SİN
ÖPTÜ ĞÜM O İS LAK DUDAK LARIN DAN ÖPTÜ ĞÜM O İS LAK



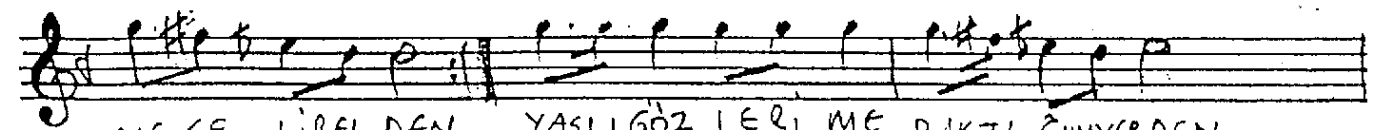
BATTI Ğİ YER DEN GÖZLERİN DO ĞU YOR GECE LE Rİ ME
DUDAK LARIN DAN



GÖZLERİN DO ĞU YOR GECE LE Rİ ME (SAZ

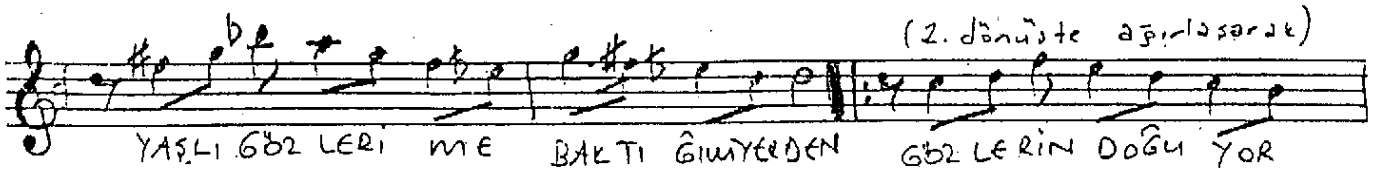


) Çİ LE Lİ DO Ğ MU ŞUM ZATENE ZEL DEN HASRE TE AL İ Ş TİM

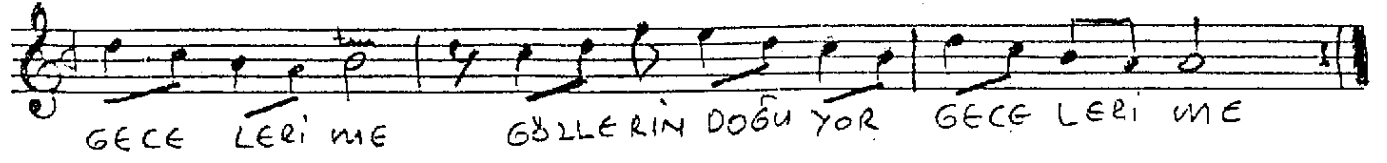


NE GE Lİ REL DEN YA Ş LI GÖZ LE Rİ ME BAK TI Ğ İ MYER DEN

(2. dönüŝte ađırlasarak)



YAŖLI GÖZ LERİ ME BAKTI GİMYERDEN GÖZ LERİN DOĐU YOR



GECE LERİ ME GÖZLERİN DOĐU YOR GECE LERİ ME