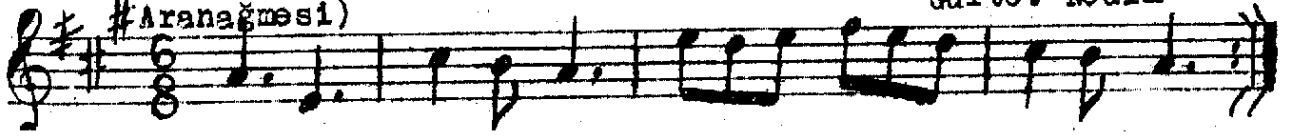


Yürük Semâi

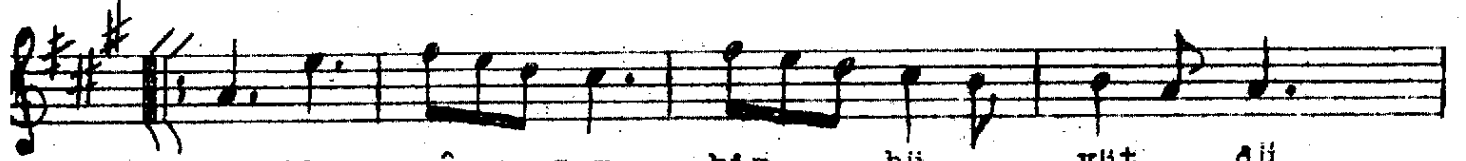
NİŞABUREK ŞARKI
(Mest-i nâzım kim büyütüdü)

Beste: Ziya Paşa
Güfte: Nedîm

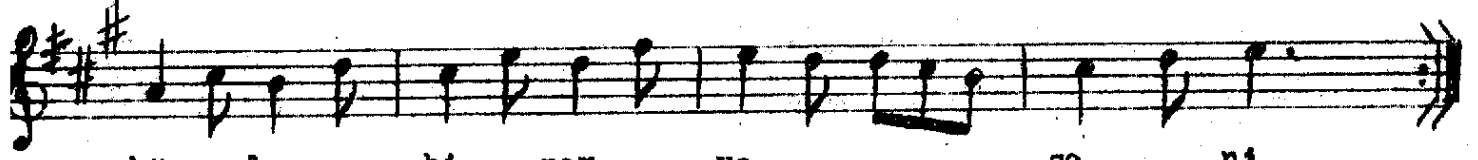
#Aranağmesi)



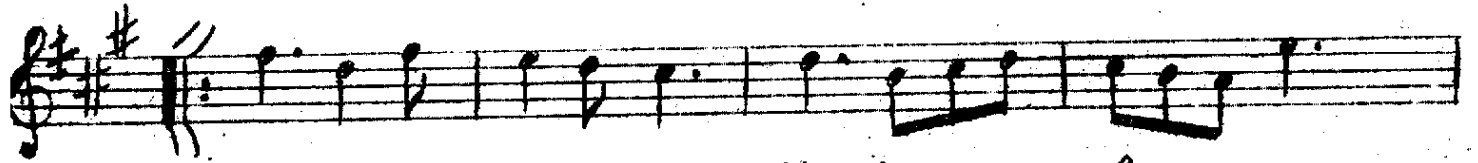
Mes ti nâ zım kim bü... yüt... dü



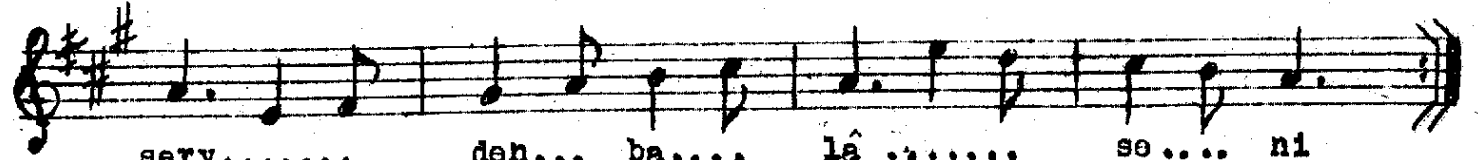
böy... le... bi... per... va..... se..... ni



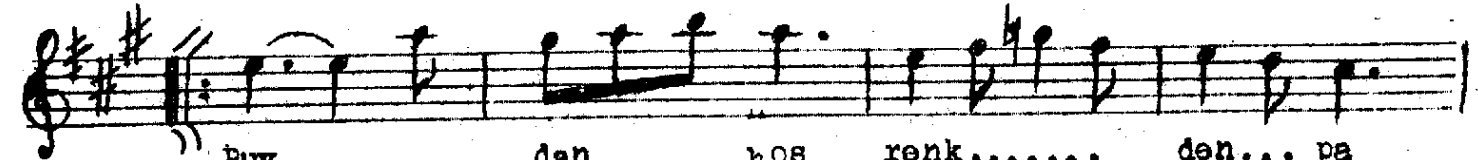
Kim ye... tiş.. dir di bu gü na



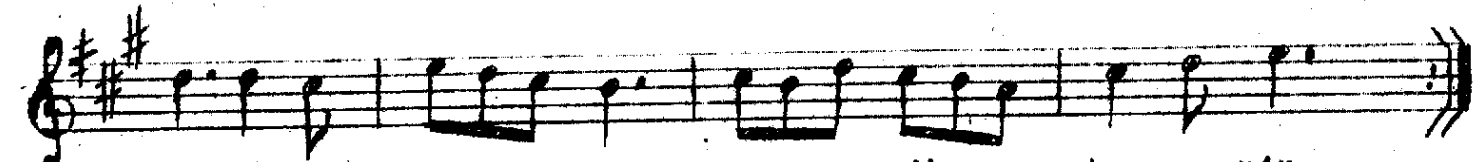
serv..... den... ba.... lâ se.... ni



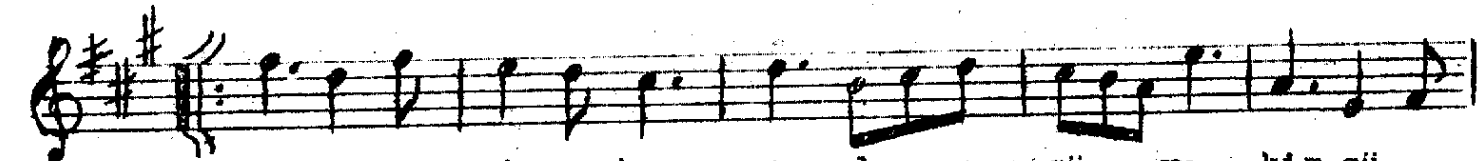
Buy..... dan hoş renk..... den... pa



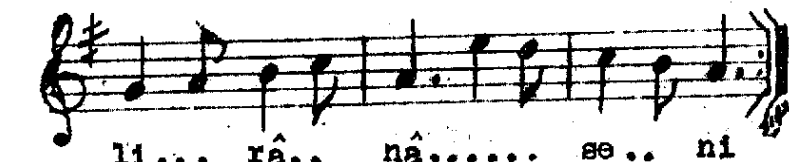
ki..... ze dir na zik te.... nin



Bes le... miş.. koy nun da gü ya kim gü...



li... râ.. nâ..... se.. ni



Mest-i nâz :Naz sarhoşu
Bî-pervâ :Pervâsız
Bâlâ :Yüksek
Büy :Güzel koku
Pakize :Temiz
Rânâ :Güzel

Mest-i nâzım kim büyütüdü böyle bi-pervâ seni
Kim yettirtirdi bu günâ servden bâlâ seni
Büydan hoş renkten pakizedir nâzik-tenin
Beslemiş koynunda güvâ kim gül-i rânâ seni (Nedîm)