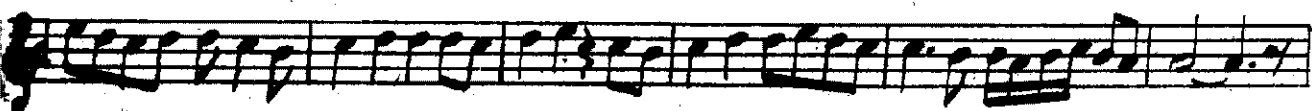
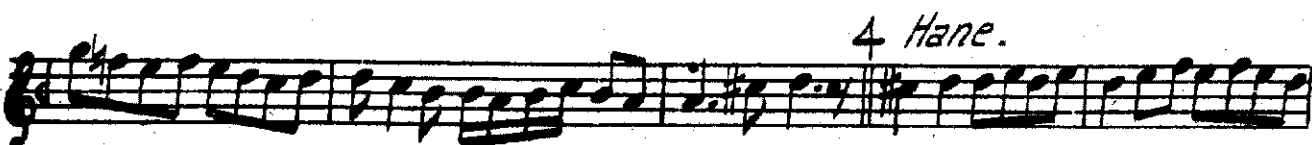
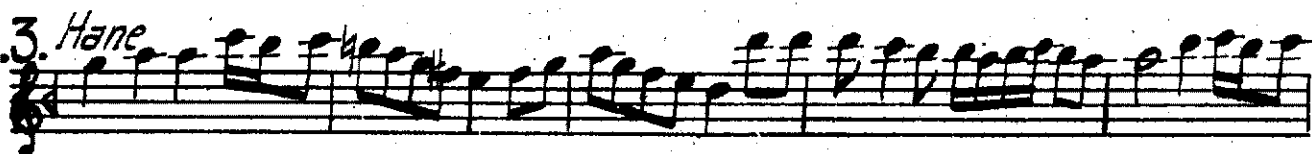
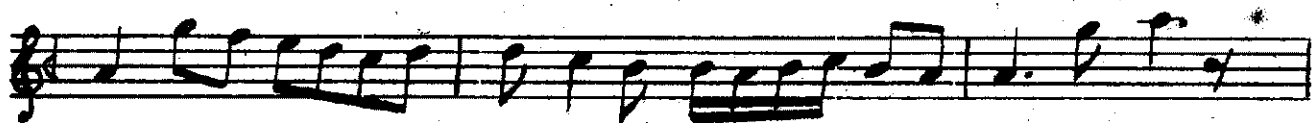
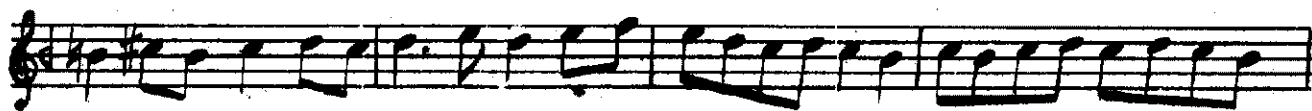
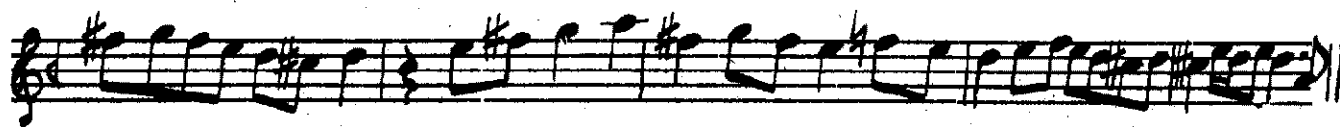
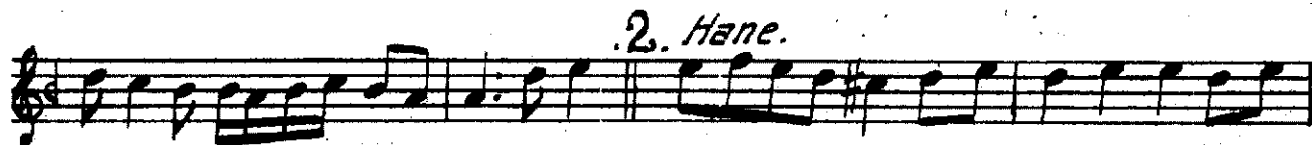
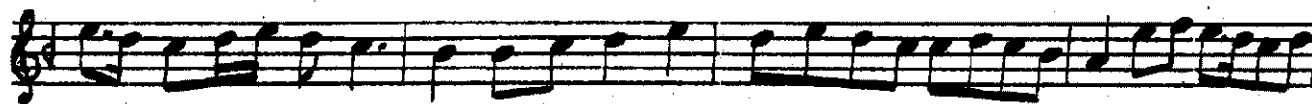


Devr-i kebir

ISFAHAN PEŞREVI

Neyzen Dede Salih Efendi



Ey . . . cen ki per de ha . . .
 Jey . . . na yi na le i

yi si pa na . . . nem ar . . . züst
 ho şi su za nem ar züst

hey yi hey . . . sul ta ri men . . .
 " " " " " "

hey . yi hey . hún . . . kâ . ri men
 " " " " " "

Ey . . . ba . di ho ş . ki . der . . .

. . . ce me ri . . . aş ki mi . . . te si

Hey . . . yi hey . . . sul . . . ta ri men . . .

hey . yi hey . hún . . . kâ . ri men Ber . . . men

gü zer . ki bu . . . yi gü lis . . . ta . . .

nem ar . . . züst hey yi hey . . . sul . ta ri men . . .

hey . yi hey . hún . . . kâ . ri men hey . yi hey ra'

. . . na . . . yi men . . . hey . yi hey . zi . . .

ba . yi men ah hiç . . mi . da ni . çi mi . . gü

.. yed . re bab yâ . ri yâr

zeş . ki . . çeş . mü ez ci ğer . ha . . yi . . ke

. bab ma ga ri ba . . ni . fi ra kim .

. Ey se han . . . yâ ri yâr Biş ne . vîd . ez

. ma i lâl . la . . . hil . . . me ab

yek . cür . a zi cā . . mi . tû te ma . . mes tû te

^{Saz}
mam cûz aş ki tû . . der di . lem kü

^{Saz}
da . . . mes . tû kü dam der . aş ki tû .

^{Saz}
hu . . ni . dil ha lâ . . . les . tû ha lâ

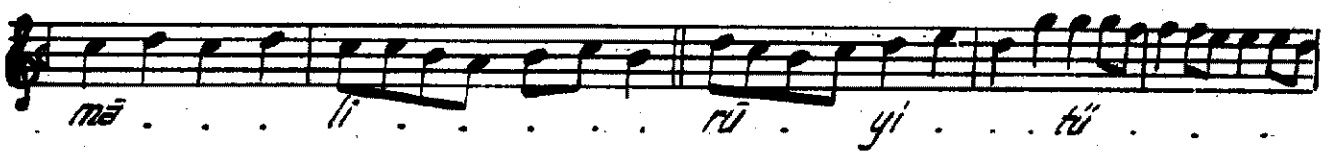
^{Saz}
A su de ki . i . . . aş . ki ha ra . . . mes tû ha ram

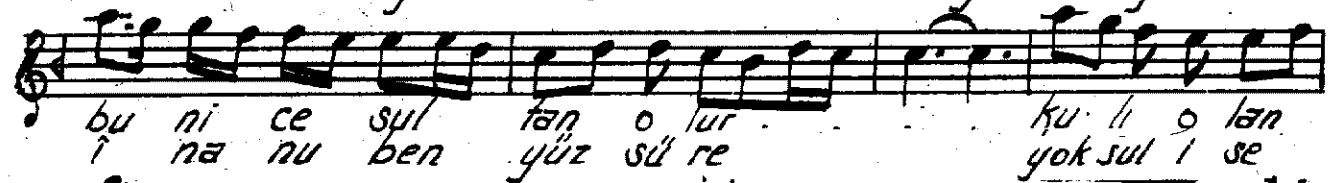
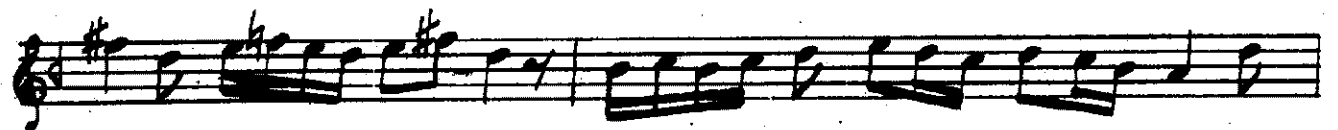
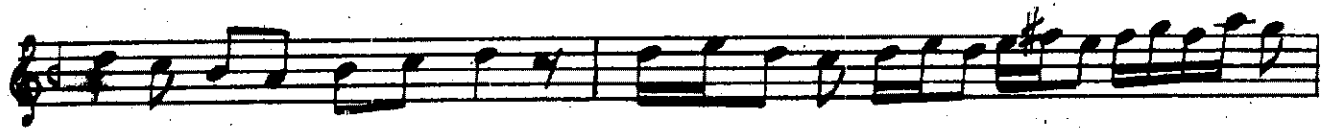
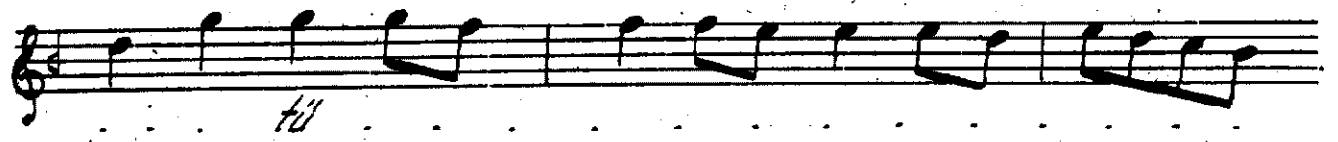
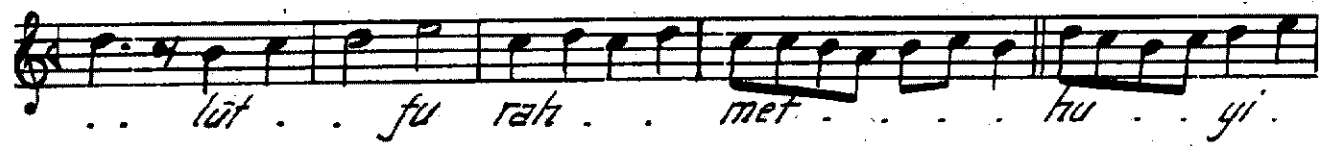
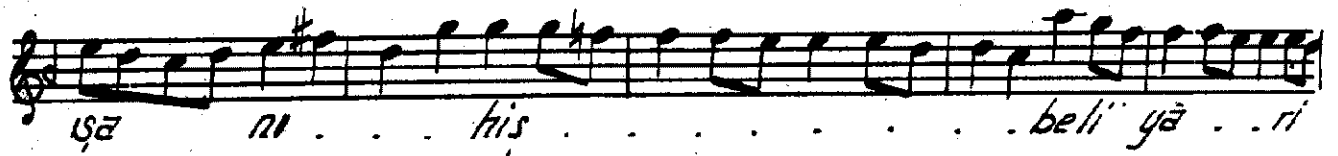
Bi ya . . kez aş ki tû di . . . vâ . . . ne keş . .



Devrikebir.

Üçüncü Selâm.





yâr hus re vü ha kan o lur
yâr bay i se sul tan o lur
Terennüm

Ah ki ba ri di ger a te si der men fû tad

vin di li di va ne baz . . . rû yi be sah

ra ni had ah . ki der ya yi ask ba ri di ger

mevcî zed vez di li men her ta raf çeş mei hun*

Terennüm

ber kü sad.

Şûd zi qa met ha ne i sey da di lem der ta le bet
Ez ta le bet gev he ri gû ya yi ask mevcî ze med

reft be her ca di lem a hi ki im rû zi di lem
mevcî der ya di lem ger ne kü ni ber di li men

ra ci sūd dū sı ci gūf test . ke sı ba dı lem
rah me ti va yı dı lem vay dı lem va dı lem

yār yū re ğim del ci ğe rim gör ki neler var

yā re ha ber var yār yū re ğim del ci ğe rim

gör ki ne ler var yā re ha ber var

Terennüm

be . Ey nā le i aş ki tū re ba bi dı li men

vay vey nā le sū de he me ce va bı dı li men

vay an dev le ti ma' mur ki mi bürsi dı

vay yā bi tū ve li ki der ha ra bi dı li men

vay yā bi tū ve li ki der ha ra bi dı li men

Dördüncü Selâm.

Övfer.

Söz

Ah sul ta ni meni sul ta
Ah der men bi de mi men zin

ni de meni ni en der
de ş vem uem yek cân 2

di lücan can î ma ni meni ni meni
(Son Pesrev) ş vud ş vud ş vud ca ni me ni ni me ni

Son Yürük Semâi.

Çon Peşrev.

Musical score for Çon Peşrev, consisting of eight staves of handwritten notation in treble clef with a key signature of one sharp (F#) and a 4/4 time signature. The notation includes various rhythmic values, accidentals, and trills.

Çon Yürük Semai.

Musical score for Çon Yürük Semai, consisting of three staves of handwritten notation in treble clef with a key signature of one sharp (F#) and a 3/8 time signature. The notation includes various rhythmic values and accidentals.