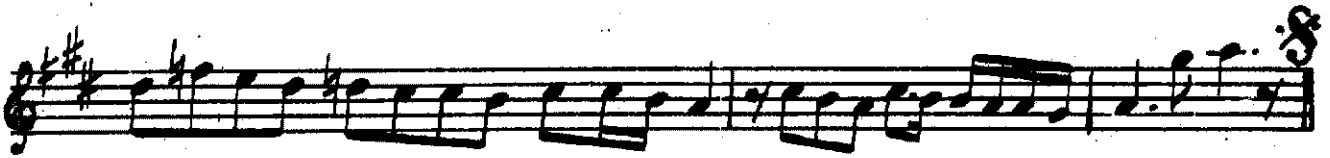


Devr-i kebir

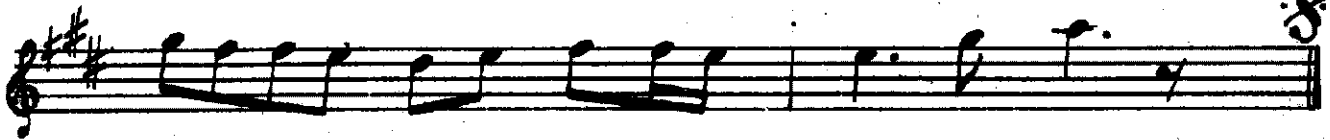
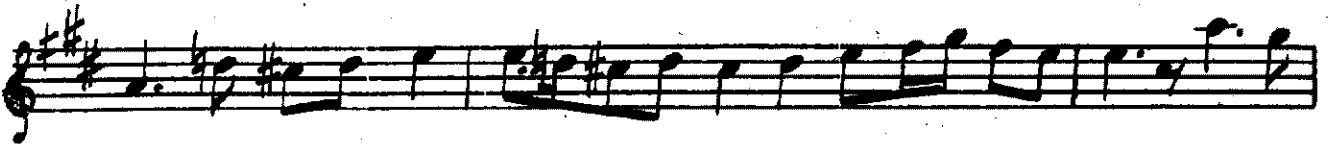
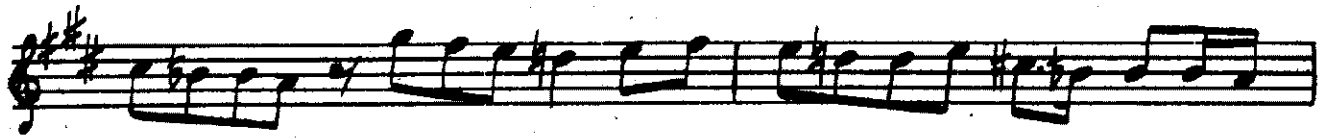
SÖZİDİL PEŞREVİ

Neyzen Emin Efendi

The image displays a musical score for a piece titled "Devr-i kebir" by Neyzen Emin Efendi. The score is written in a single system with 11 staves. The key signature is two sharps (D major) and the time signature is 2/8. The first staff is labeled "Devr-i kebir". The fifth staff is labeled "Teslim". The eighth staff is labeled "2. Hane" and the eleventh staff is labeled "3. Hane.".



4. *Hane.*





ce men . bā . . . tū ne mi qū yem

men . mūr de ne mi sū yem . . . . . men . hā . . .

hā ne mi hā rem hey . . . . . hey . hey hey

yā ri yā ri mēn dost . . . . . dost . . . . .

yā ri yā ri mēn he yi hey hey he yi yār . .

ri . . . . . ri mēn in . kis . ti in . . . . .

in . kis . . . . . ti in . . . . . . . . . . si . ri ri zi . . . . .

bā . ā . . . . . me de sermes . tū nā . . . . .

in der . . . . . be gal . . . . . der . hā ne i . . . . .

mā . ā . . . . . me de hā . ne . de rū . . . . .

hay ran . sū de . . . . . en . di . . . . . se ser . . . . .

ger dān . sū de sad . ak . lū cān . . . . .

en der . . . pe yer . . . bi . destubi . . .

pa . ā . . . me de e yi mā . de ni . . .

ā tes . bi ya . . . ā tes . . . ç'i mi . . .

cū . yi . . . zi mā ual . lah ki mek . . .

res tū . . . de ga . . . in . tā ki io . . .

cā . ā . . . me de rū . pū . . . si cūn . . .

pu sed . tū ra . . . ey . rū yi tū . . .

Sem . sed . . . du ha Ey . gūn ci hā . . .

ne ez . . . ru hat cūn . deş . tū sah . . .

ra ā . . . me de Ah ne da red des tū pa . . .

bî . . . aşk . . . o bî des tū bi . pa . . .

yem ah ki rū zū şebcū mec . . . nū . . .

nem . . . . . se ri zenci ri mi hā . . . . . yem

Ah hā yā lā tihē me . . . . . lem . . . . .

e ğer cı ā sı na da . . . . . ned ahi be hun gar

ka ve vem . . . . . bil . . . . .

lah . . . . . e ğer in rā zi bük va . . . . . yem

## Kinci Selâm

*Evfer.*

Ah . . . . . ğer cer . hi . . . . . ze nan . . . . .

nan . . . . . hem cün . fe . . . . . le kem . . . . .

ah . . . . . ğer pā . . . . . ze nan . . . . .

nan . . . . . hem cün . me . . . . . le kem . . . . .

ah . . . . . cer ham . pey . . . . . hak

ah . . . . . rak sam . . . . . pey . . . . . hak . . . . .

Hak . . . men zâ . . . ni : . . . ve yem . . .

yem . . . ni müs . . . te . . . . . re kem . . .

Terennüm.

## Üçüncü Selâm

2/4  
Fer . de . . . di . . . ger . . . me

zen . . . . . cîz per de i . . . dil . . . da . . . ri

ma an . he . . zâ . . . ran . . .

yu . . . sü . . . fi . . . şı . . . rin şı rin .

. . . . . kâ . . . kâ rû ma

yû su fan . . . ta mes . . . ti . . . ker . . .

ded per de hâ . şan ber . berde rid

gam . ze . . . i . . . çeş . . . . ma . . . ni . . .

mes . . . ti . . . an şe . hi . hun . . . ha . . . ri ma

Eu ki he zâr a fe rin . bu ni ce sul tan o lur  
her ki bu gûn ve'le de i na nu ben yüz sü re



*Ey ki he zâr, a fe rin - bu ni ce sul tan o lur*  
*Her ki bu gün ve le de i na nu ben yüz sü re*

*ku li o lan ki si ler - huse vü ha kan o lur*  
*Terennüm. Uok sul i se bay o lur bay i se sul tan o lur*

*Serbe geri ban dü rüst so fi i es ta ri ta ta ri ta*

*Ta ci be ra red zi gayb a ki be ti ka ri ta*

*Ba di be hâk a me de a bi ber a tes ze de*

*ba di be hâk a me de a bi ber a tes ze de*

*esk be hem ber ze de hay me i in cā re ra*  
*Terennüm.*

*Ba de hin an yâ ri ka det ha re ra yâ ri tû rûs*

rû yi se ker pâre ra ha mû şî kûn güft ki in

â le mest terk kûn in â le mi gad de re ra

ah gü ze lin aş ki na ha lâ ti na yandı yü rek

aşk . ha ra ra ti na and i ce yim gayri gü zel

sev me yim tan ri ye vü Ten ri nin â yâ ti na

yâr yâr yar yü re ğim yâr dost . dost . .

gör ki ne ler vâ r yâr yü re ğim del ci ğe rim

gör ki ne ler vâ r . . . yâ re ha ber vâ r

Terannüm.

Ey

kâ şî fi es ra ri hu da Mey lâ . . na . . yâr . .

yâr . . yâ ri yâ ri men sul ta ri je na şa hi be ka

Mevlâ na . . . yâr . . . yâr . . . yâ ri yâ ri men Aşk

it mededir hazreti ne böyle hi tâb . . . yâr . . . yâr . . .

yâ ri yâ ri men Mevlâ yî gürâ hi ev li yâ Mevlâ ne

yâr . . . yâr . . . yâ ri yâ ri men .

Evfer. (Dördüncü Selâm)  
Ah . . . sul ta . ni . . . . . meni . . . . .

ni . . . . . sul ta . . . ni . . . . . meni . . . . .

ah . . . . . en der . . . di . . . . . lü can . . . . .

can . . . . . i ma . . . ni . . . . . meni . . . . .

ah . . . . . der men . bi . . . . . demi . . . . .

ah . . . . . men zin . . . de . . . . . sevem . . . . .

vem . . . . . yek can . . . ci . . . . . se ved . . . . .

ved . . . . . sad ca . . . ni . . . . . me ni . . . . .

*Çon Peşrev.*

*Derviş Yekta*

Handwritten musical notation for Çon Peşrev, consisting of ten staves of music in G major. The notation includes various rhythmic values and melodic lines.

*Çon Yürük*

Handwritten musical notation for Çon Yürük, consisting of three staves of music in G major. The notation includes various rhythmic values and melodic lines, with some measures marked with '4' and '2' above them.