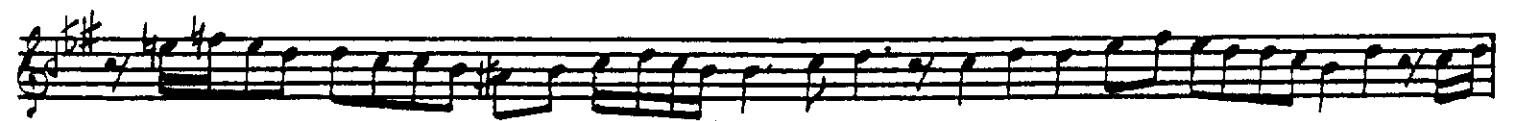
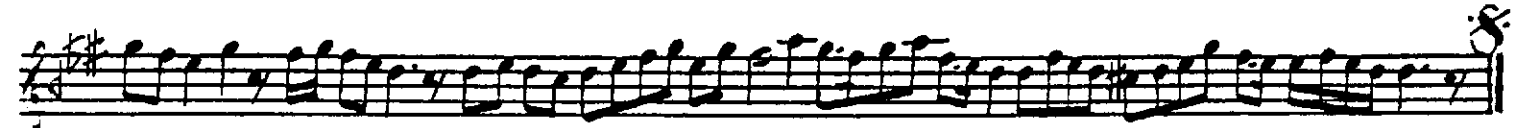
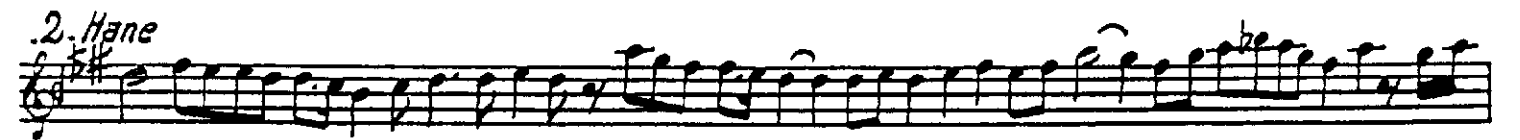
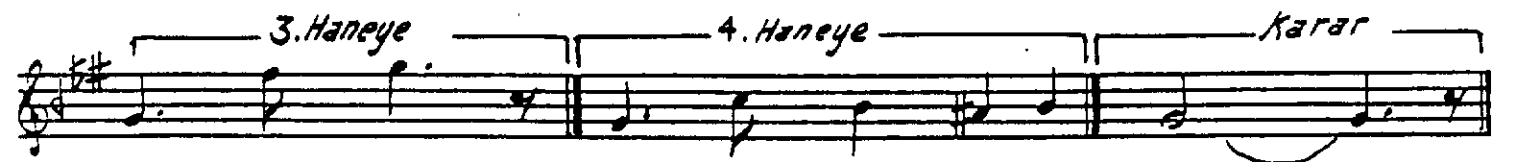
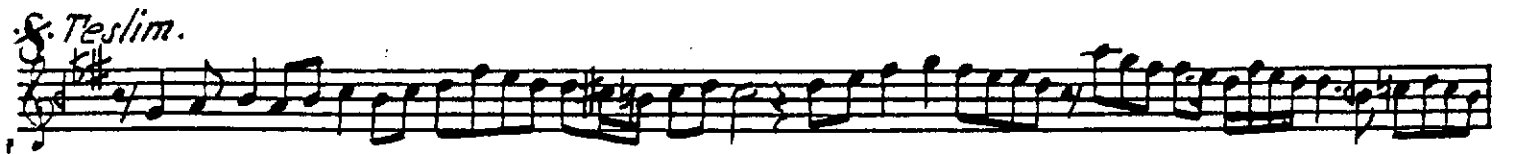
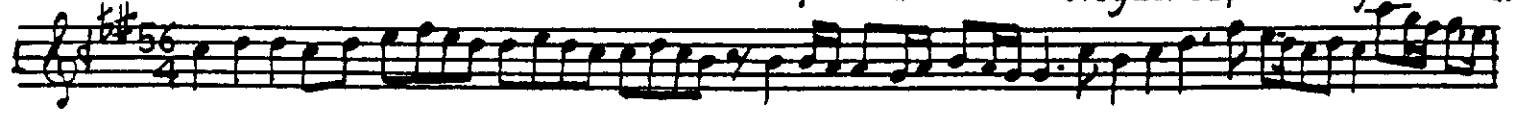
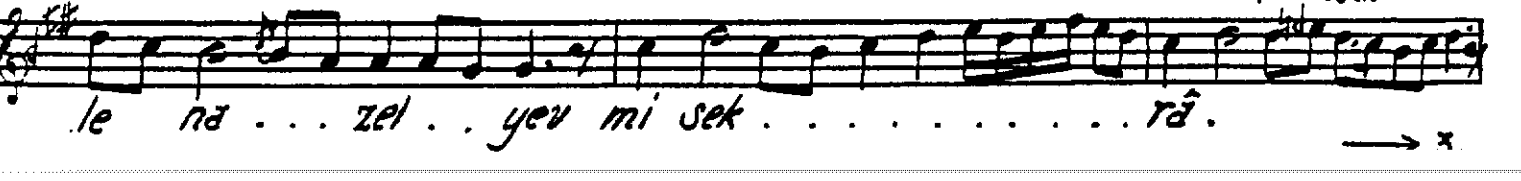
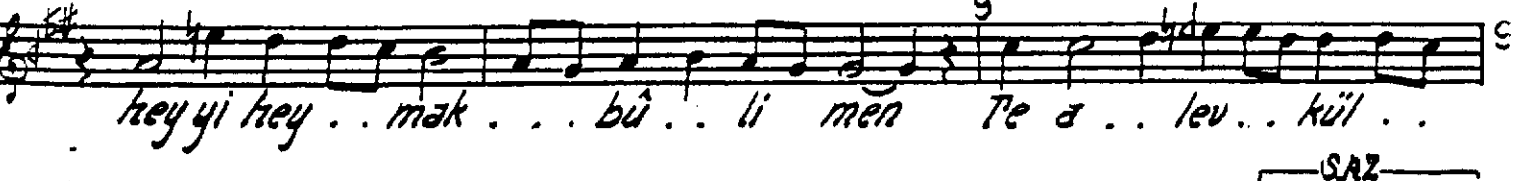
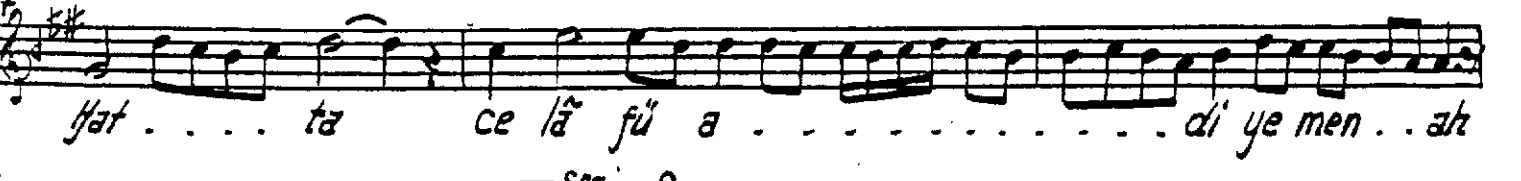
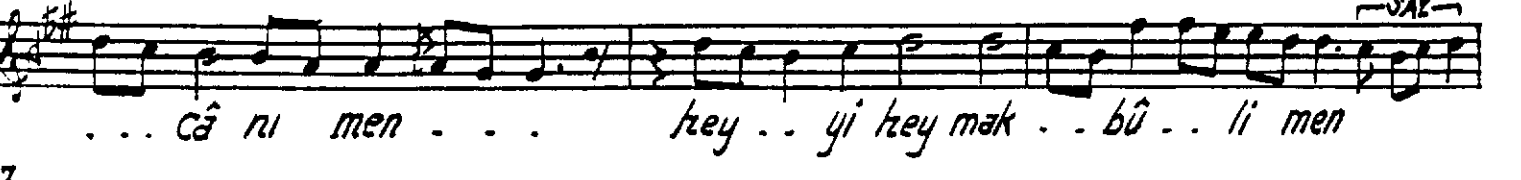
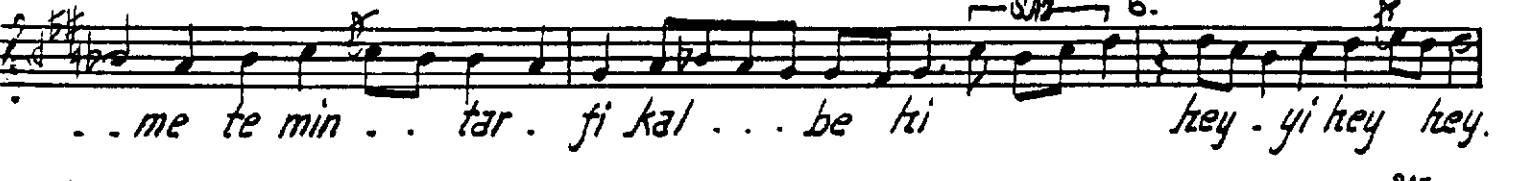
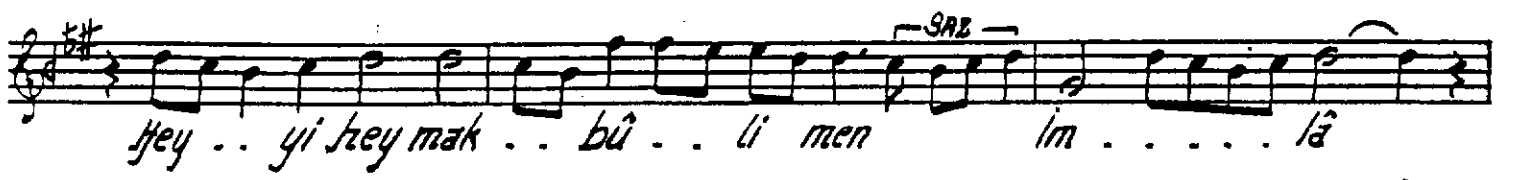
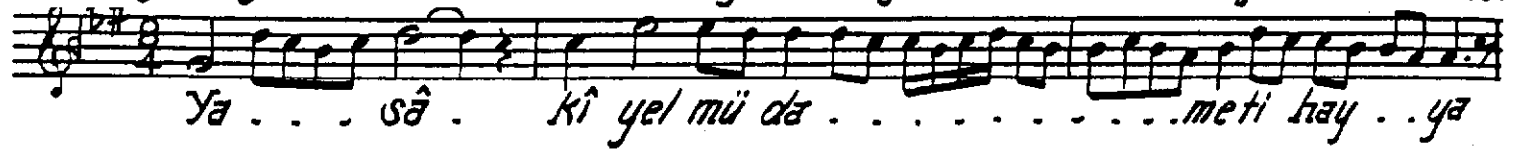


Devr.i Kebir

"Sûzinâk Peşrevi"

Neyzenbaşı Emin Efendi 1.





Bi ak . . da . . hin . . tü ha . . mi ru na ve tet . . . . .  
 ra Te a . . lev . . in . . ne ha . . zel . . yev  
 me iy . . . . . Dün . .  
 Te cel . . lâ . . . . fi . . . . ki ma . . . . ter . . . . cu  
 ne cek . . . . . ra  
 El yev . . . . me mi nel vas . . li ne sü . . . . .  
 mün ve sü ü . . . . . dün  
 El yev . . . . me e râl . . kub bi a lel . . . . .  
 Ah di ku ü . . . . . dün  
 ya . . kav . . me i lel . . aş . . ki e ni . . . . .  
 bü ve e ci . . . . . bü  
 lem ma . . ke te bal la kü a lel . . . . .

16. *As ki hu lü . . . . . dü'n*

17. *Kad sab . . ba ha nal . . la hü bi au . . . . .*

*şin . . ve mü da . . . . . mün . .*

18. *kad . . ay . . ye de nel . . iy dü ve kad . . . . .*

*tem me si ya . . . . . mün . .*

19. *im lâ ka de han . . . . . ve ha . . . ti ya . . . . .*

*hay . ra gû lâ . . . . . mün . . . . . SAZ . . . . . mün . . . . . SAZ . . . . .*

20. *Key . . yes . . kü re na . . . . . süm me a led . . . . .*

21. *deh ri se lâ . . . . . mün . . . . .*

*hey . . . . . hey . . . . .*

*yâ ri yâ . . . . . ri . . . . . men . .*

*hey . . . . . hey . . . . . → 5.*

Be li mi . . ri . . . . . men . .

Dost . . . . . dost . . . . .

Ah . . . . . pi . . ri . . . . . men |

Ah . . . . . ah . . . . .

dest . . gi . . ri . . . . . men . .

yar . . . . . yâr . . . . . it

San . . . . . me . . ded . . . . .

Dost . . . . . dost . . . . . sul . .

tan . . . . . me . . . . . ded . . . . .

Ah . . . . . ah . . . . . sub . . . . .

kan . . . . . me . . . . . ded . . . . . güf . . . . .

ran . . . . . me . . . . . *ikinci selâm* 9/4  
→ 6.

Ded . . . di sul . . ta . . ni . . me . . ni . . .

Ah . . . hi sul . . ta . . ni me . . ni . . .

ah . . . En . . der . . di . . lü can . . .

Can . . . i . . ma . . ni . . me ni . . .

Ah . . . der . . men . . bi . . de mi . . .

Ah . . . hi men . . zin . . de se . . vem . . .

Ah . . . yek . . can . . çı . . se ved . . .

ved . . . sad . . ca . . ni . . me ni . . .

Ah . . . i . . ma . . ni . . me ni . . .

*'Berennüm'*

1 2

## DEVT. I KEBİR

## "UÇURCU ÜELAM"

7.

Ey . yü . ha . . . . . et . . . . . lel . fe . . . . . ra . . . . . dis

ik . ra . . . . . ü . . . . . men . . . . . şu . . . . . TE NA . . . . .

ved . he . . . . . şu . . . . . min . . . . . ham . . . . . ri na . . . . . ves . . . . .

Tes . . . . . ma . . . . . u . . . . . na . . . . . ku . . . . . TE NA . . . . .

hur rü . . . . . küm . . . . . tas . . . . . fer ru . . . . . aş . . . . . kan

Ten . ha . . . . . ni . . . . . min . . . . . na . . . . . ri hi . . . . .

lev . re . . . . . et . . . . . fi . . . . . can . . . . . hi ley . . . . . lin

ev . ne . . . . . şa . . . . . rin . . . . . hür . . . . . re na . . . . .

## 38 Aksak Semai

Ak . . . . . be li yâ . . . . . rim

yuruk vema!

39.

8.

Ey ki he zâr a fe rin . dost dost bu ni ce sul  
Her ki bu gün ve le de " " i na nu ben

tân o lur ku . lu o lan ki . si ler . . câ . . nim . .  
yüz sü re yok su li se ba . yo lur . . câ . . nim . .

hüs re vü ha ka . no lur . . dost . . dost hüs re vü ha  
ba yi se sul ta . no lur . . " " til ki se ars

kan o lur "Berennüm"  
lan o lur

RU

41.

ki lek . ya zâ i ru fil ley li fe da yâr ya mu ni se vah

şe ti . i zel ley li ke da - yâr in kâ ne fi ra ku name as .

sub . ki be da yâr lâ . es fe re bâ de ze ke sub ha . e be dâ . .

2.

yâr . . yâr . . . . yâr yâ ri men yâr dost . . . . dost . . . .

dost yâ ri men yâr Ah yâ ri men yâ ri mera dost yâ ri men yâ ri mera

"Berennüm,"

dost yâ ri men vâ y



44. *Te a li ya me dedelay si ves sil ru ri te al te a li ya fe ra cel hem*  
*li ka ü vec hi ke fil hem mi fa li kal is - bah si ka ü cu di ke fil hel*

*mi fa ti hal ek fâl te a li ya fe ra cel hem mi fa ti hal ek fâl*  
*ri mün te hel ik bâl si ka u cu di ke fil fak ri mün te hel ik bâl*

45. *"Gerennüm"*

Musical staff with notes and rests.

46. *vec hü ke mis bü l ka mer kal bü ke mis bü l . ha cer ru kü ke rü*

47. *hül be ka . . hüs . nü le rü hül be sar hic rü ke rü hi . . fi dâk*

*zel ze le ni . . fi . . . tze vâk kül lü ke ri min je vâk*

48. *je ku ve hi da in ci var yâr yü re ğim yâr*

*gör ki ne ler . . var yâr yü re ğim del ci ğe rim*

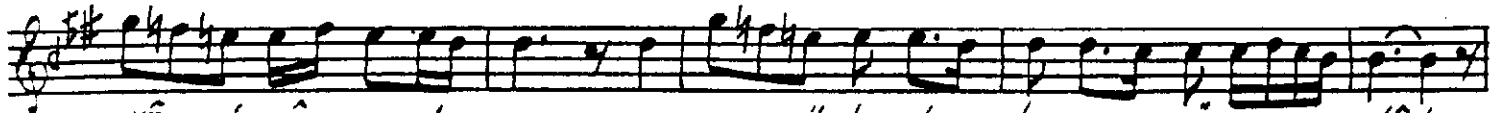
*gör ki ne ler var . . . . . yâr re ka ber var . .*

49. *"Gerennüm"*

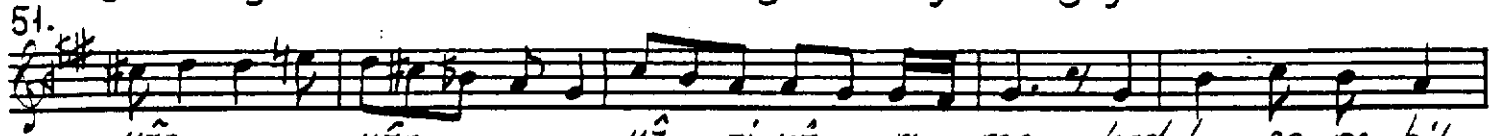
Musical staff with notes and rests.

50.  10.

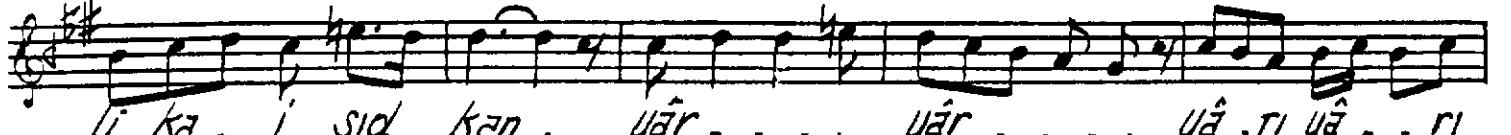
Men mu am ma hü gay rü ma. düd. yâr . . . . yâr . . .



yâ . ri yâ . . ri men ves sa . yü le dey . hi gay rü mer . düd .

51. 

yâr . . . . yâr . . . . yâ . ri yâ . ri men kad beş se re bil



li ka . i sid kan . yâr . . . . yâr . . . . yâ . ri yâ . . ri



men min haz . re ti hil ke ri . . mi mev düd . .



yâr . . . . yâr . . . . yâ ri yâ . ri

### Dördüncü Setim

52. *Evfer.* 

men . . . sul . . ta . . ni . . me . . ri . . . . .



Ah . . . . sul . . tâ . . ri me . . ni . . . .  
Ah . . . . men . . zin . . de şe . . vem . . . .



Ah . . . . en . . der . . di . . lü can . . . .  
Ah . . . . Yek . . can . . ci . . şe ved . . . .



Can . . . . ma . . ri . . me ni . . . .  
ved . . . . sad . . ca . . ni . . me ni . . . .



ah . . . . der . . men . . bi . . de mi . . . .  
ah . . . . i . . ma . . ni . . me ni . . . .

*Son Yürük Semâî*

Not: Bu Âyin-i Şerif, Sayın Nezih Uzel tarafından, İst. Belediye konser vafuarı yayınlari-  
dan olan Mevlevî Âyinlerinden alınıp, Notaları, Sayın Gürsel Koçak'ın yazdığı Âyinleri yazıldı.  
H. Z. Akçiğit.