

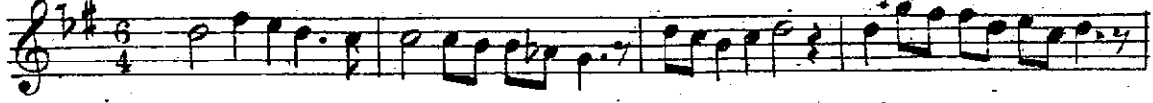
# Suzinâk makamında ve semâi ikanda dâğı şarki

Zekâi Dede Efendi

AĞIRCA

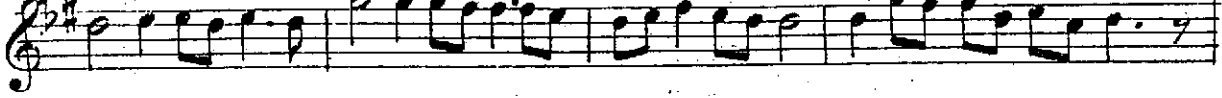
Ney le di gör " ba na - o - ma - hi - me hi

Saz



da ga dü şür . dü budi li - a - ge - hi

Saz



keş ti de rim aş - kı le deş - ti - re - hi

Saz

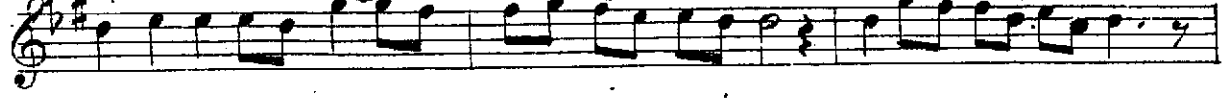


na levü ef ga ni mi san - ma - te - hi ah - mi - nel



aş - kı ve ha - la - ti - hi

Saz

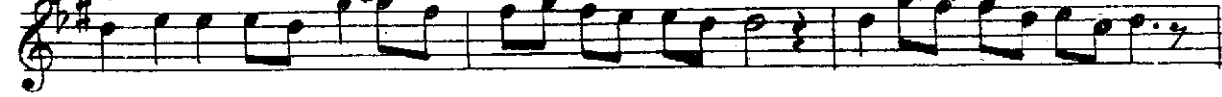


ah ra ka kal bi bi ha ra ra - ti - hi ma na za rel



ay - nü i - lâ - gay - ri - küm

Saz



uk si mü bil - lâ hi ve - a - ya - ti h dost



dost

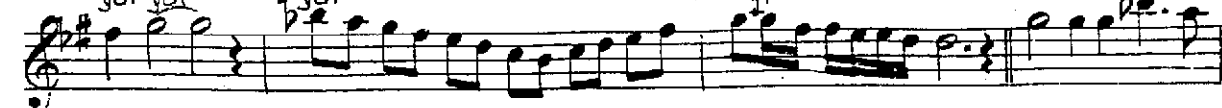
dost

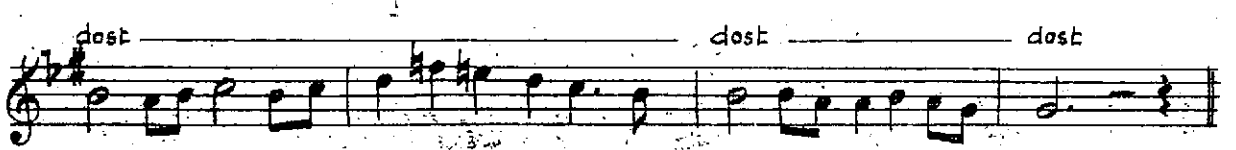
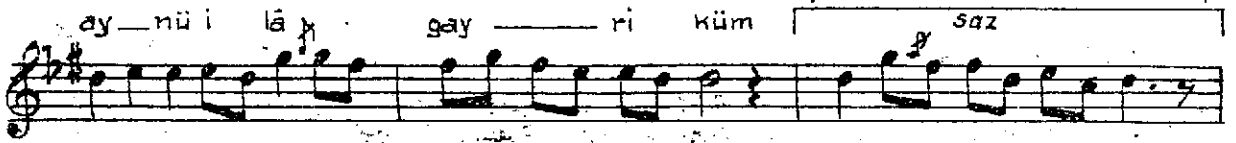
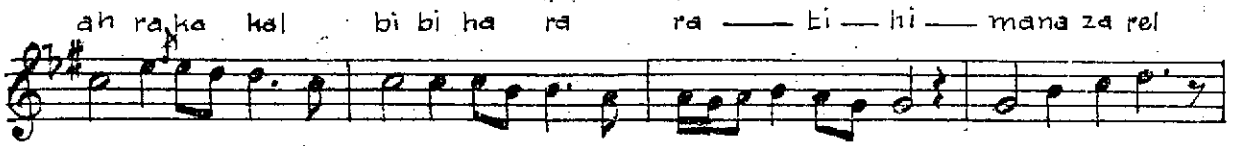
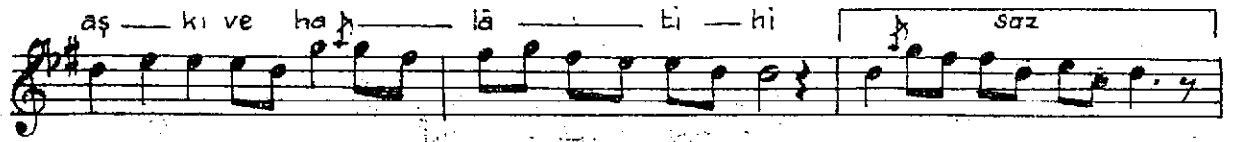
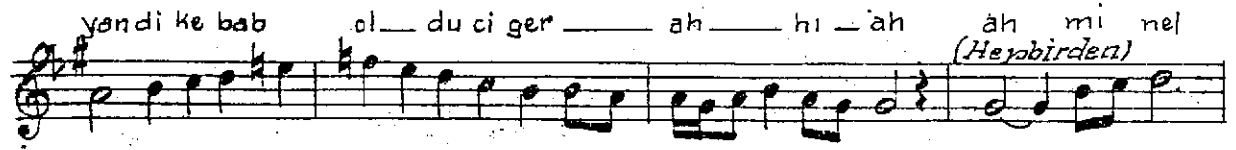
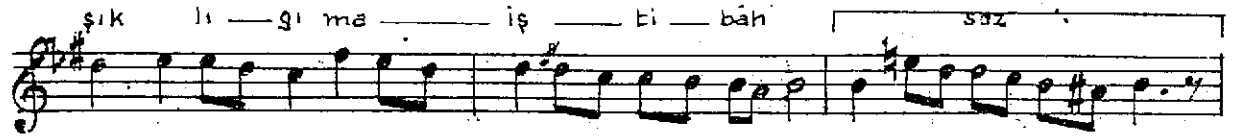
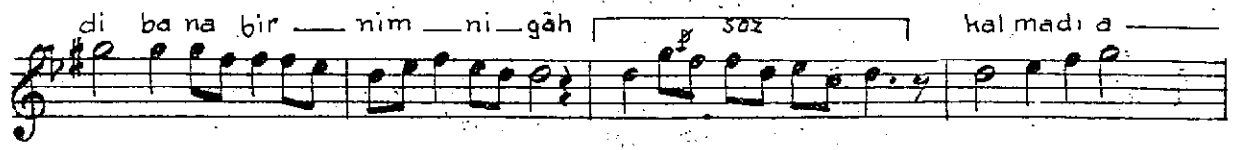
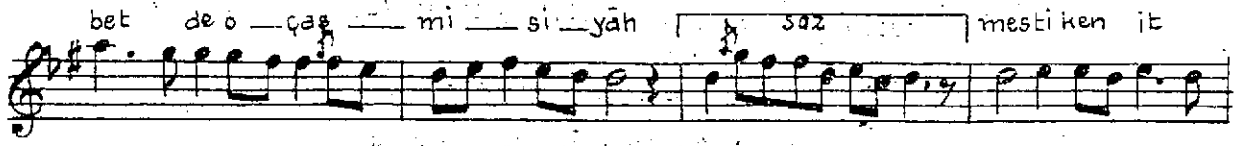
dost



(Bir kişi tarafından)  
yar yar

bezmimehab





### G Ü F T E S İ

Neyledi gör bana omahimehi. daga düşürdü bu dili agehi

Keşt iderim aşkile deştürehi. nalevü efganımı sanma tehi

Ah-minel aşkı-ve halâtihi. ahraka-kalbi-biharara tihi

Manazarel-aynü-ila-gayriküm. uksimü-billahi-ve âyâtihi

Dost dost dost dost

Bezmi-mehabbetde-o çesmi-siyah. mestiken-itdi bana biranim nigâh

Kalması aşkılgıma iştibah. yandı kebab oldu ciger ah ah